

PROPERTY | WITH PURPOSE

R135,900 per month excl. VAT

R100 per m²



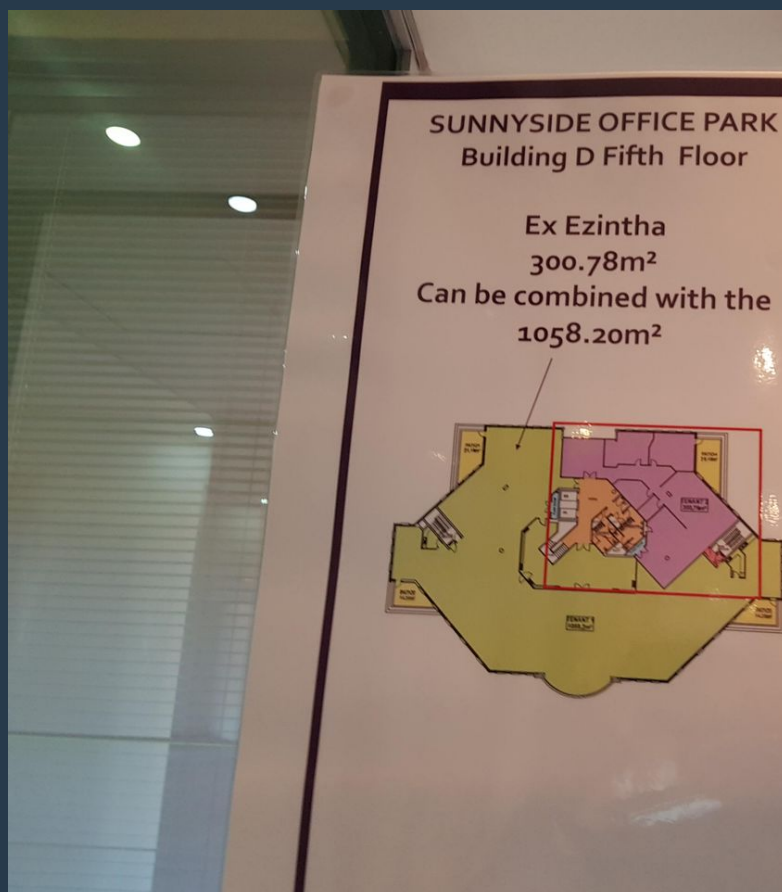
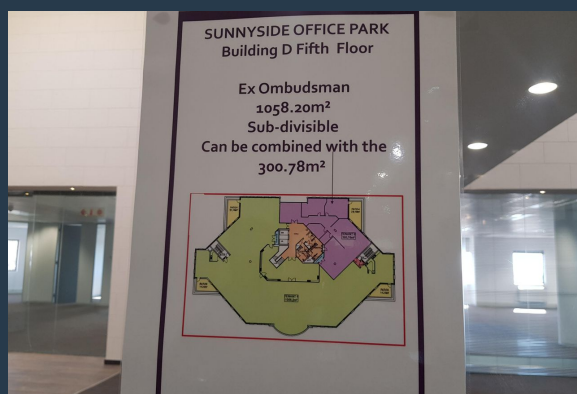
www.spire.co.za

TO LET

SUNNYSIDE OFFICE PARK, PARKTOWN

32 Princess of Wales terrace

1359m² To let in the Sunnyside Office Park based in Parktown offers office spaces for either new businesses or business that has been around. This office park has an attractive setting with various refreshing water fountains, beautiful well-maintained gardens, and iconic buildings, with exquisite interior. It is located nearby the Killarney Mall and features a secure boomed access point with security guards monitoring the ins and outs of visitors, providing easy access to Carse O'Gowrie Rd and Princess of Wales Terrace. The park hosts numerous large-scale companies in the various blocks, to create an appealing professional environment. Furthermore, the park offers stunning gardens, and large windows which are well manicured allowing the...



WEB REF: CL3287

Nadeema Chothia | 083 305 5354 | nadeemac@spire.co.za

PROPERTY | WITH PURPOSE

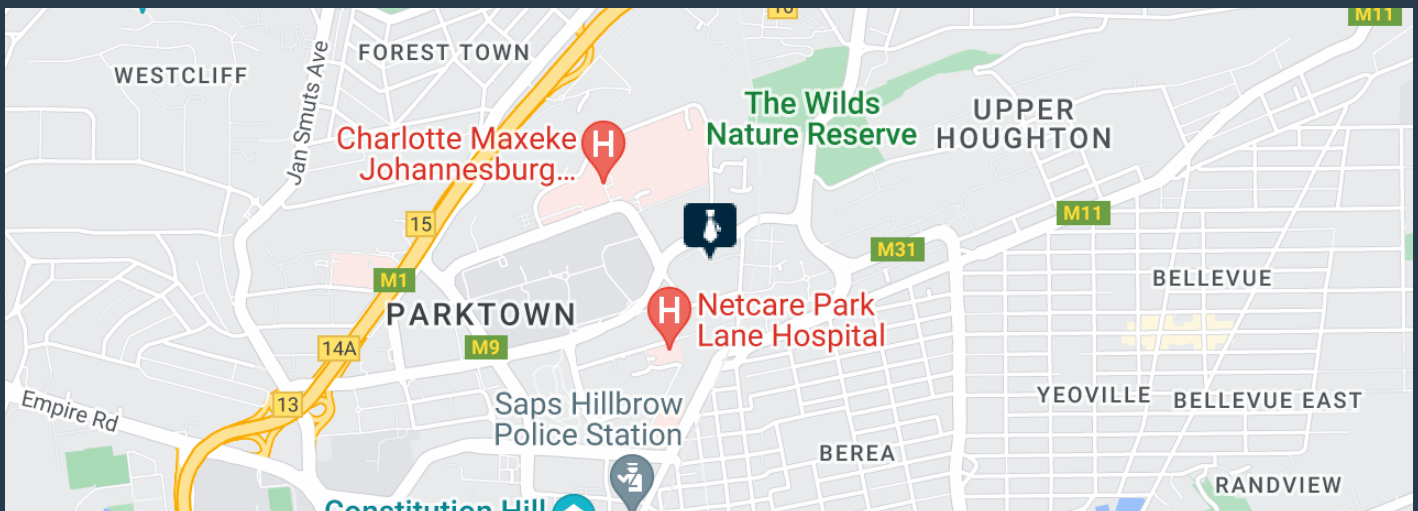
R135,900 per month excl. VAT

R100 per m²



www.spire.co.za

1359M2 TO LET IN THE SUNNYSIDE OFFICE PARK



PROPERTY DETAILS

▲ Security	Yes	▲ Basement Parking	750.0	▲ Floor Size	1359m ²
▲ Air Conditioning	Yes			▲ Zoning	Commercial

WEB REF: CL3287

Nadeema Chothia | 083 305 5354 | nadeemac@spire.co.za

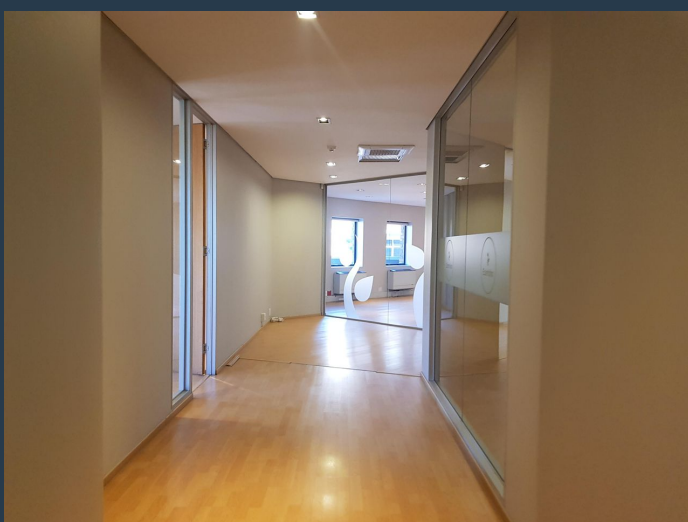
PROPERTY | WITH PURPOSE

R135,900 per month excl. VAT

R100 per m²



www.spire.co.za



CONTACT US



Nadeema Chothia

Agent

☎ (011) 2685871

📱 083 305 5354

✉ nadeemac@spire.co.za



Kate Shimwell

Agent

☎ (011) 2685871

📱 082 493 0273

✉ kates@spire.co.za

WEB REF: CL3287

Nadeema Chothia | 083 305 5354 | nadeemac@spire.co.za