

PROPERTY | WITH PURPOSE

R37,440 per month excl. VAT

R80 per m²

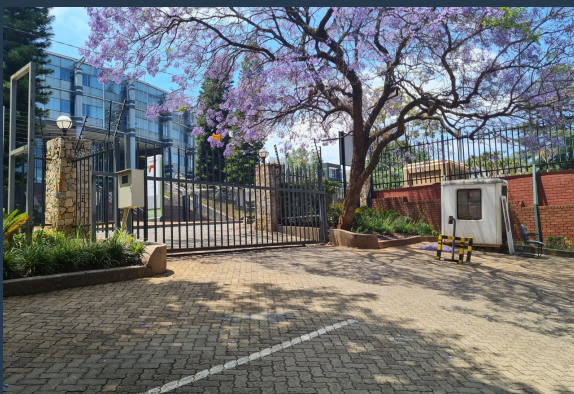


www.spire.co.za

TO LET



468 Sqm Office Space to Let in Parktown within 24 Wellington. This spacious, neat office unit is partitioned to feature office suites, meeting rooms, an open plan area, a reception area and a server room. The unit also has a kitchenette and internal bathrooms for the tenant's convenience. The building has a back up generator, a cleaner on site and 24-hour security. 24 Wellington Road is situated in the heart of Parktown's historic business district. The area is in close proximity to Rosebank, Saxonwold, Westcliff and Johannesburg CBD, with access to the M1 and M27 highways. We have been helping businesses just like yours to find their perfect commercial retail or industrial space. Our team of property professionals are ready to find...



WEB REF: CL2578

Nadeema Chothia | 083 305 5354 | nademac@spire.co.za

PROPERTY | WITH PURPOSE

R37,440 per month excl. VAT

R80 per m²



www.spire.co.za

OFFICE SPACE TO LET IN PARKTOWN, JOHANNESBURG | 24 WELLINGTON



PROPERTY DETAILS

▲ Security	Yes	▲ Floor Size	468m ²
▲ Air Conditioning	Yes	▲ Zoning	Commercial

WEB REF: CL2578

Nadeema Chothia | 083 305 5354 | nadeemac@spire.co.za

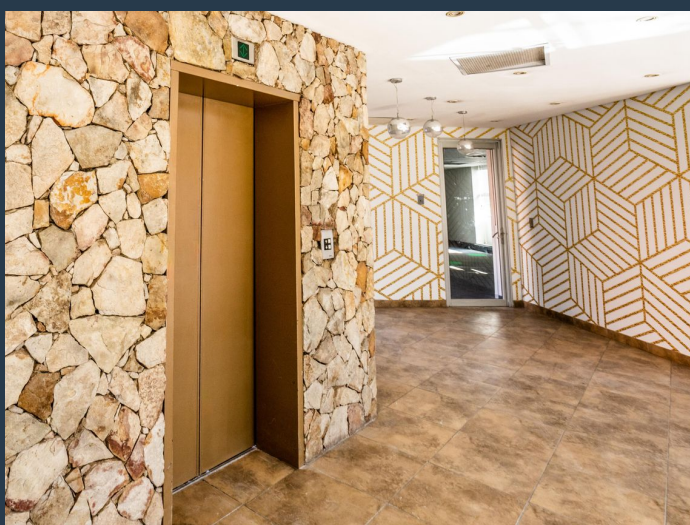
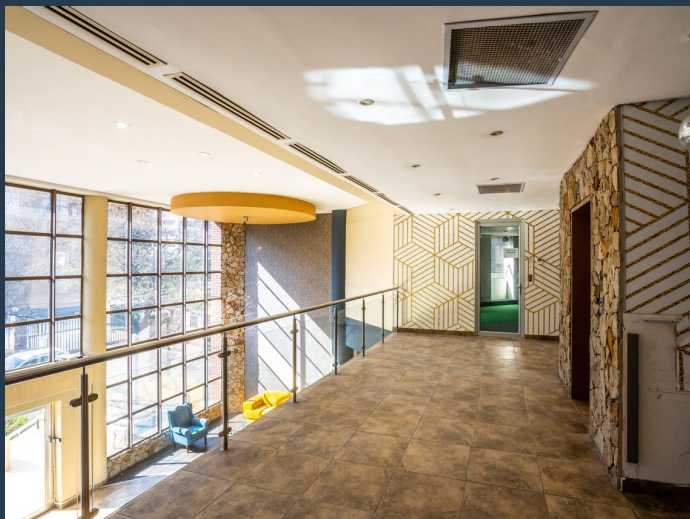
PROPERTY | WITH PURPOSE

R37,440 per month excl. VAT

R80 per m²



www.spire.co.za



CONTACT US



Nadeema Chothia

Agent

☎ (011) 2685871

📱 083 305 5354

✉ nadeemac@spire.co.za



Kate Shimwell

Agent

☎ (011) 2685871

📱 082 493 0273

✉ kates@spire.co.za

WEB REF: CL2578

Nadeema Chothia | 083 305 5354 | nadeemac@spire.co.za