

PROPERTY | WITH PURPOSE

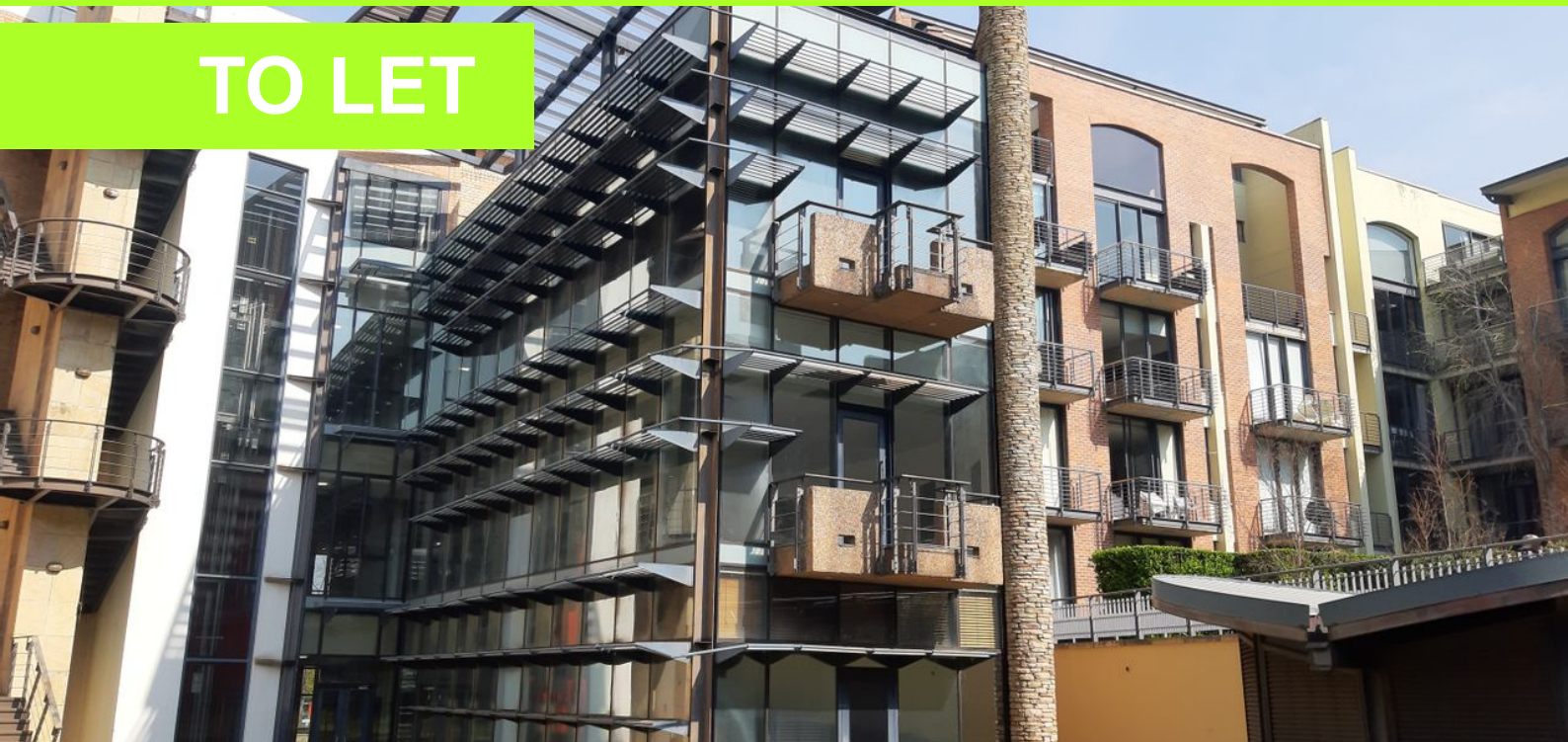
R15,000 per month excl. VAT

R150 per m²

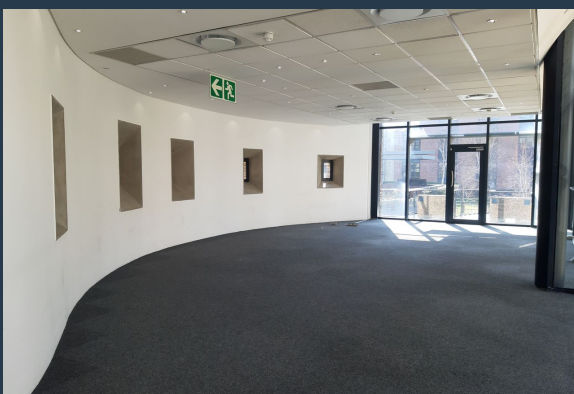
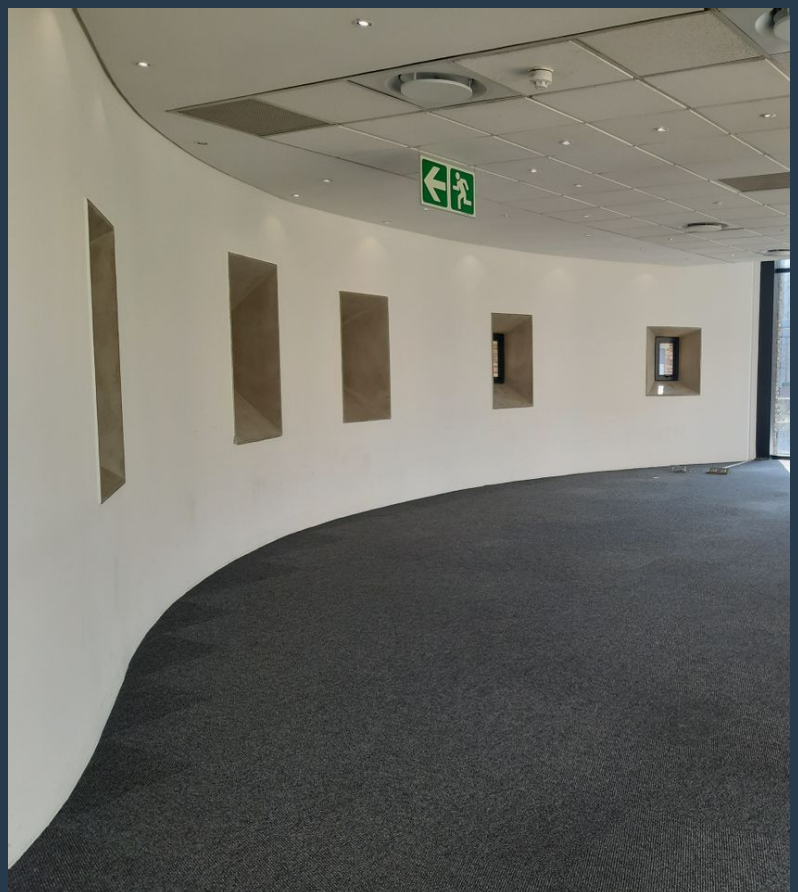


www.spire.co.za

TO LET



100m2 Office space to rent in Melrose Arch. The premise is a curved open plan space with a small balcony overlooking communal gardens. There is Back up power in the building and close to restaurants and shops. This space would be great for a small business with a small team. The Melrose Arch precinct is located close to Sandton as well as Rosebank and has great residential, retail and commercial mix with ample parking and great security. We have been helping businesses just like yours to find their perfect commercial retail or industrial space. Our team of property professionals are ready to find your perfect space. We have a longstanding relationship with the top property funds and property management companies in the city. We feature...



WEB REF: SCL985

Nadeema Chothia | 083 305 5354 | nadeemac@spire.co.za

PROPERTY | WITH PURPOSE

R15,000 per month excl. VAT

R150 per m²



www.spire.co.za

OFFICE SPACE TO RENT IN MELROSE ARCH



PROPERTY DETAILS

- ▲ Floor Size 100m²
- ▲ Zoning Commercial

WEB REF: SCL985

Nadeema Chothia | 083 305 5354 | nadeemac@spire.co.za

PROPERTY | WITH PURPOSE

R15,000 per month excl. VAT

R150 per m²



www.spire.co.za



CONTACT US



Nadeema Chothia

Agent

 (011) 2685871

 083 305 5354

 nadeemac@spire.co.za

WEB REF: SCL985

Nadeema Chothia | 083 305 5354 | nadeemac@spire.co.za