

PROPERTY | WITH PURPOSE

R22,449 per month excl. VAT

R184 per m²

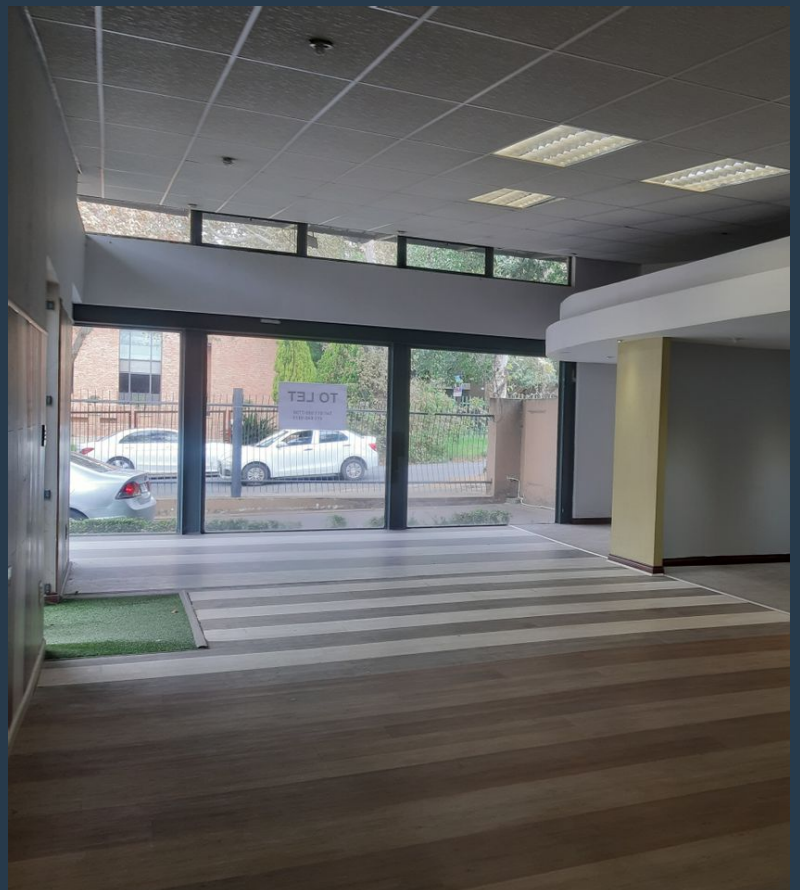


www.spire.co.za

TO LET



121m2 office Space to Rent in Houghton Estate. The premise is located close to Rosebank and has easy access to the M1 highway. It has a boardroom and an open area. This premise can be used as a showroom or a creative space. There is parking and a communal garden for lunch breaks. Spire Property Solutions is a new generation, multi-level property group with operations throughout South Africa. Our focus is property with a purpose. Operationally, Spire will extract and grow optimum value for property owners and lease clients through core services. Spire Property Broking is a solutions driven division focused on leasing and sales for Commercial, Industrial and Retail Properties. With a national team of committed and professional brokers and...



WEB REF: SCL286

Nadeema Chothia | 083 305 5354 | nadeemac@spire.co.za

PROPERTY | WITH PURPOSE

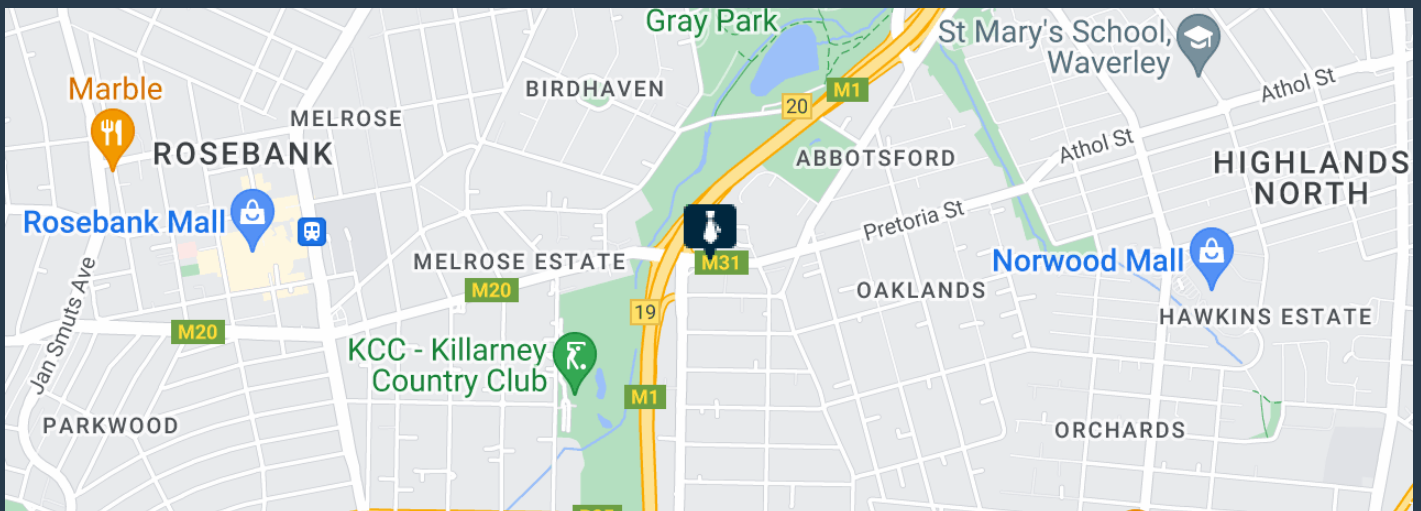
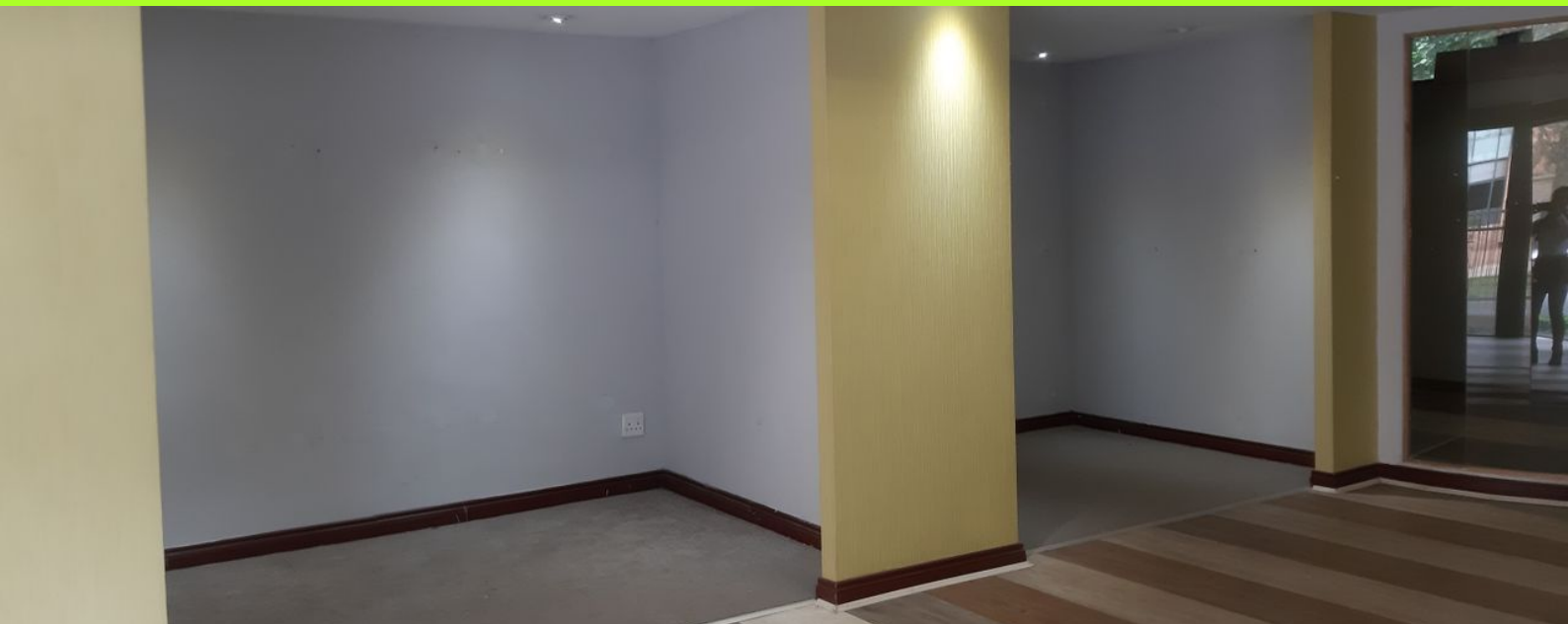
R22,449 per month excl. VAT

R184 per m²



www.spire.co.za

OFFICE SPACE TO RENT HOUGHTON ESTATE



PROPERTY DETAILS

- ▲ Floor Size 121m²
- ▲ Zoning Commercial

WEB REF: SCL286

Nadeema Chothia | 083 305 5354 | nadeemac@spire.co.za

PROPERTY | WITH PURPOSE

R22,449 per month excl. VAT

R184 per m²



www.spire.co.za



CONTACT US



Nadeema Chothia

Agent

☎ (011) 2685871

📱 083 305 5354

✉ nadeemac@spire.co.za

WEB REF: SCL286

Nadeema Chothia | 083 305 5354 | nadeemac@spire.co.za