

PROPERTY | WITH PURPOSE

R19,920 per month excl. VAT

R60 per m²



www.spire.co.za

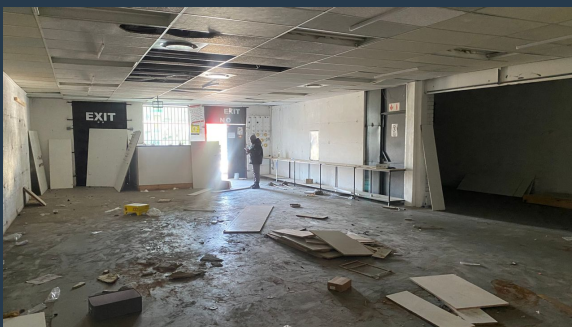
TO LET



CNR LOUIS BOTHA

601 Cnr louis botha and forest road

332 Sqm Office space to rent in Bramley, Johannesburg. The office has multiple office spaces, a bathroom and. The building is right next to Louis Botha av linking you to other areas such as Bramley. There is communal parking in front. There is an outside parking space for your clients and also entrances that welcome big products for your organization. They are storage spaces inside the space for other use. Bramley in Johannesburg is a suburb which is well established and reasonably old. It is in a prime location for access to amenities and major routes to other suburbs and towns which are one of the factors driving demand for property in these tree lined streets in the Johannesburg North East suburb. We have been helping businesses just...



WEB REF: SCL823

Nadeema Chothia | 083 305 5354 | nademac@spire.co.za

PROPERTY | WITH PURPOSE

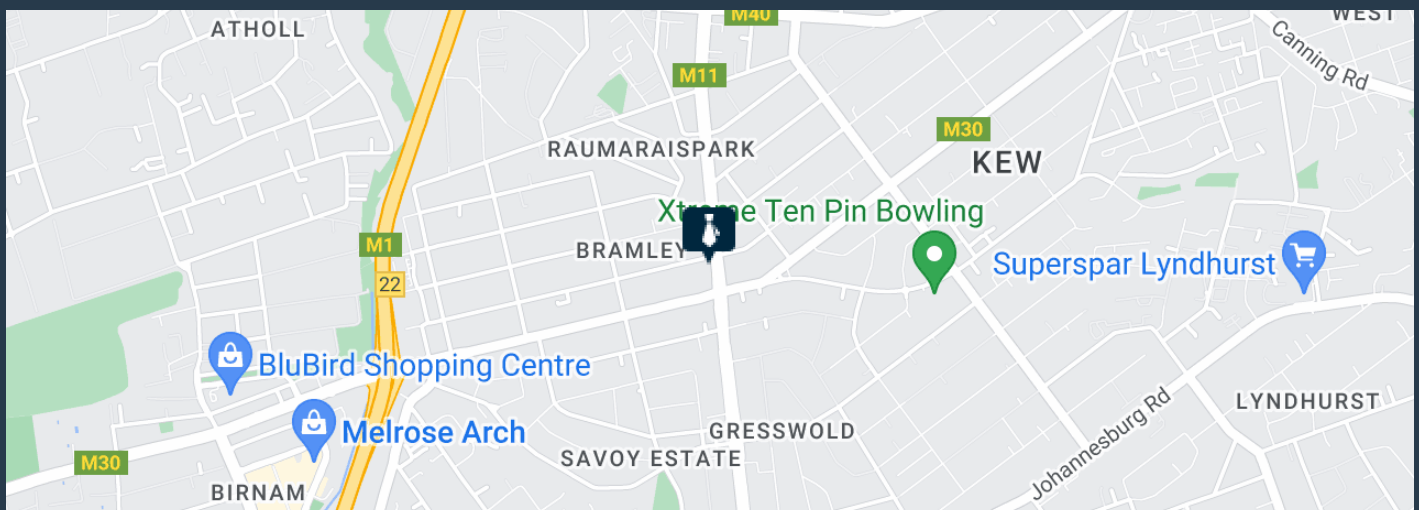
R19,920 per month excl. VAT

R60 per m²



www.spire.co.za

OFFICE SPACE TO LET IN BRAMLEY, JOHANNESBURG



PROPERTY DETAILS

- ▲ Floor Size 332m²
- ▲ Zoning Commercial

WEB REF: SCL823

Nadeema Chothia | 083 305 5354 | nadeemac@spire.co.za

PROPERTY | WITH PURPOSE

R19,920 per month excl. VAT

R60 per m²



www.spire.co.za



CONTACT US



Nadeema Chothia

Agent

 (011) 2685871

 083 305 5354

 nadeemac@spire.co.za

WEB REF: SCL823

Nadeema Chothia | 083 305 5354 | nadeemac@spire.co.za