

PROPERTY | WITH PURPOSE

R8,500 per month excl. VAT

R85 per m²



www.spire.co.za

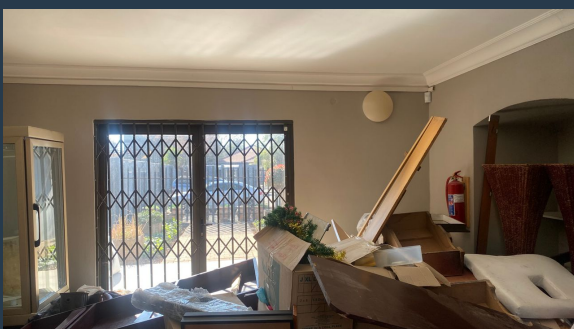
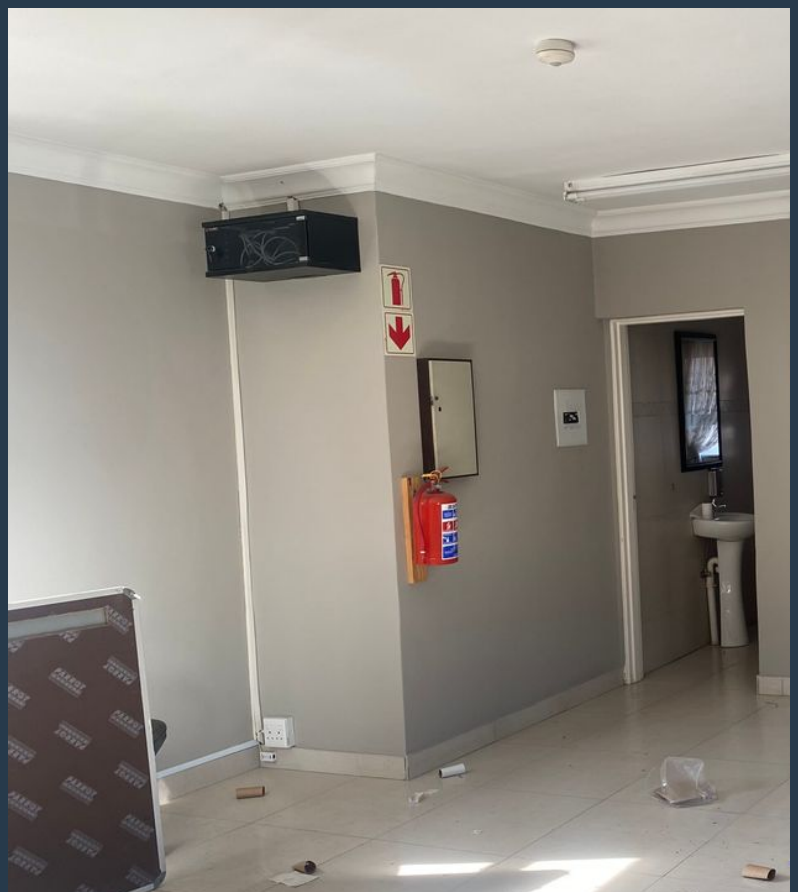
TO LET



POOL SQUAD

98 forest road

100 Sqm Office space to rent in Bramley, Johannesburg. The office space is situated with a 1st floor and 2nd floor of the building. It has multiple office spaces, a bathroom and an outside space that could be used for meetings. The building is right next to Louis Botha av linking you to other areas such as Bramley. There is communal parking in front and at the back. The space has 24/7 security who watch over you and the other tenants. Bramley in Johannesburg is a suburb which is well established and reasonably old. It is in a prime location for access to amenities and major routes to other suburbs and towns which are one of the factors driving demand for property in these tree lined streets in the Johannesburg North East suburb. We...



WEB REF: SCL787

Nadeema Chothia | 083 305 5354 | nadeemac@spire.co.za

PROPERTY | WITH PURPOSE

R8,500 per month excl. VAT

R85 per m²



www.spire.co.za

OFFICE SPACE TO LET IN BRAMLEY, JOHANNESBURG



PROPERTY DETAILS

- ▲ Floor Size 100m²
- ▲ Zoning Commercial

WEB REF: SCL787

Nadeema Chothia | 083 305 5354 | nadeemac@spire.co.za

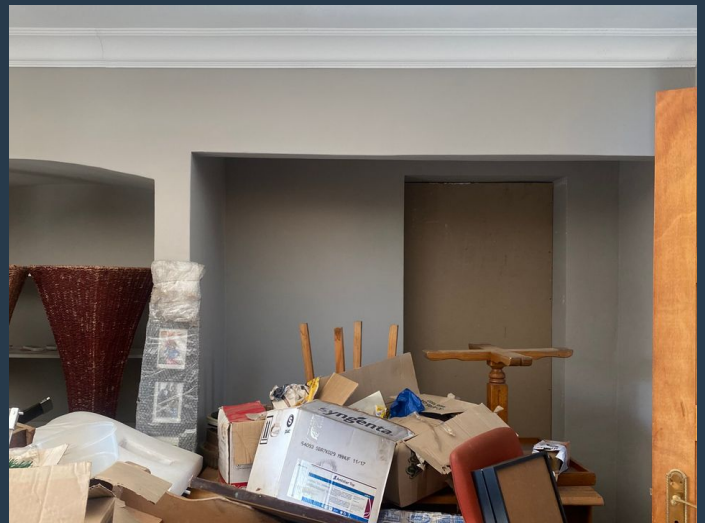
PROPERTY | WITH PURPOSE

R8,500 per month excl. VAT

R85 per m²



www.spire.co.za



CONTACT US



Nadeema Chothia

Agent

☎ (011) 2685871

📱 083 305 5354

✉ nadeemac@spire.co.za

WEB REF: SCL787

Nadeema Chothia | 083 305 5354 | nadeemac@spire.co.za