

PROPERTY | WITH PURPOSE

R90,750 per month excl. VAT

R110 per m²



www.spire.co.za

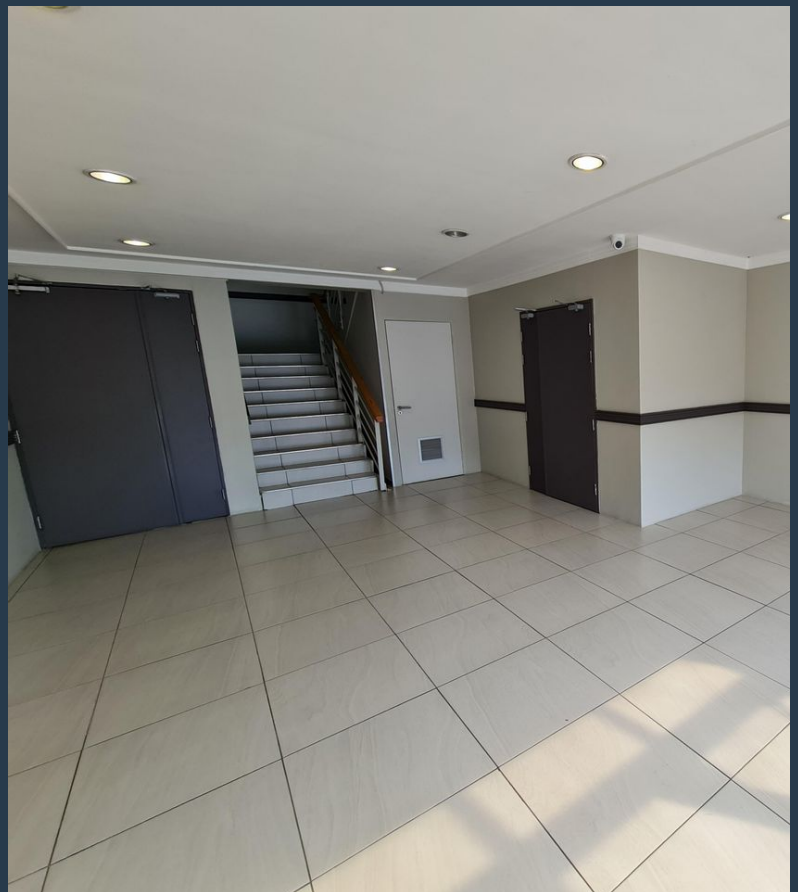
TO LET



N1 HOUSE

1 Neels Bothma Street

Large 825 sqm office to Let in Goodwood ideal for the medical industry!! The space is situated on the 1st floor of the Nurture Health Cape View Hospital Building and offers a lovely large reception and waiting area, large open plan office space split into 2 wings with large windows and excellent natural light, various management offices, board room, staff canteen and pause area, IT room/storage space. N1 House is a well maintained office park situated in N1 City. The Office Park enjoys easy access to the N1 highway and public transport. This office park offers fiber, ample parking, 24-hour manned security and access control at the main entrance. At Spire our values are simply summarised in our name: Sustainability, Purposeful,...



WEB REF: CL2359

Chantel Georgiadis | 0845251014 | chantelg@spire.co.za

PROPERTY | WITH PURPOSE

R90,750 per month excl. VAT

R110 per m²



www.spire.co.za

LARGE 825 SQM OFFICE TO LET IN GOODWOOD IDEAL FOR THE MEDICAL...



PROPERTY DETAILS

▲ Security	Yes	▲ Floor Size	825m ²
▲ Air Conditioning	Yes	▲ Zoning	Commercial

PROPERTY | WITH PURPOSE

R90,750 per month excl. VAT

R110 per m²



www.spire.co.za



CONTACT US



Chantel Georgiadis
Non-Principal Property Practitioner

☎ (021) 6854020
📱 0845251014
✉ chantelg@spire.co.za



Kevin Hellyer
Candidate Property Practitioner

☎ (021) 6854020
📱 061 484 5578
✉ kevinh@spire.co.za