

PROPERTY | WITH PURPOSE

**R44,880** per month excl. VAT

R136 per m<sup>2</sup>

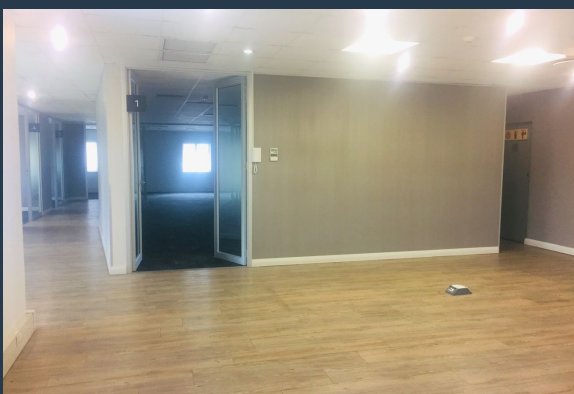


[www.spire.co.za](http://www.spire.co.za)

**TO LET**



330 Sqm Office Space to rent in Stoneridge Office Park, Greenstone. This office space is situated on the First Floor of Building A North. It consists of an open space and multiple partitioned offices, kitchenette, aircons and communal toilet on the same floor. There's 24-hour security available at the main entrance of the office park with controlled boom gates for visitors, Stoneridge Office Park is situated in the hearts of Greenstone and is a stone throw away from Stoneridge Shopping Centre, Greenstone Shopping Centre, Greenstone Hill Motor City and Stonehill Crossing Shopping Centre. The office park is within proximity with many residential complexes. There's back up power and a canteen in the office park with public transport also...



WEB REF: SCL258

Nadeema Chothia | 083 305 5354 | [nademac@spire.co.za](mailto:nademac@spire.co.za)

PROPERTY | WITH PURPOSE

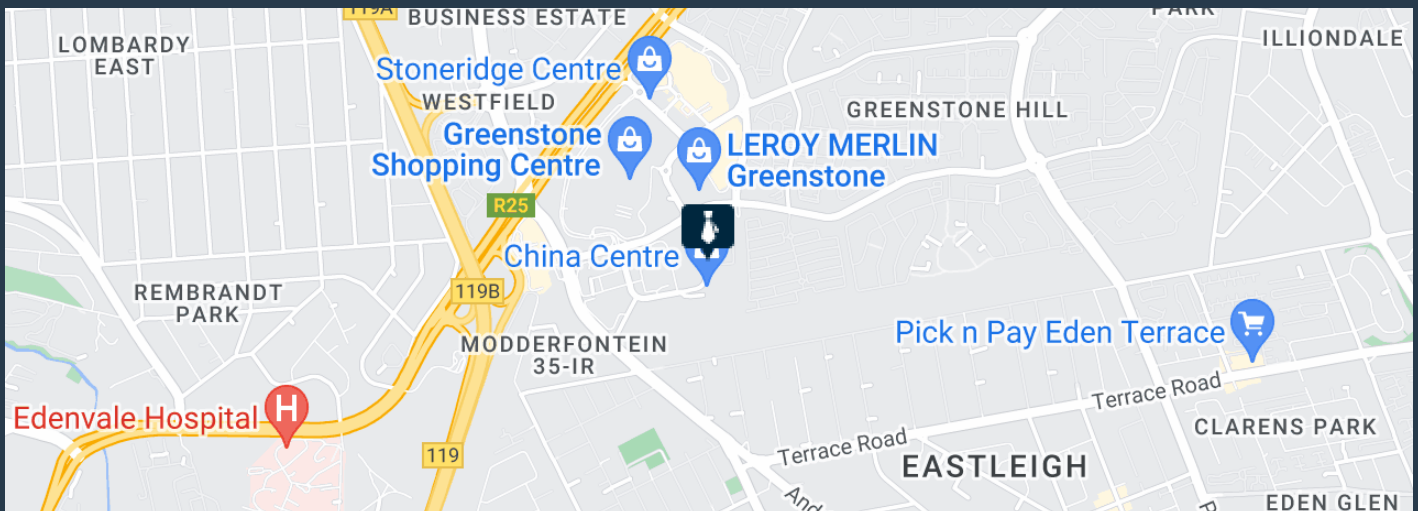
**R44,880** per month excl. VAT

R136 per m<sup>2</sup>



[www.spire.co.za](http://www.spire.co.za)

## OFFICE SPACE TO RENT, GREENSTONE HILL



### PROPERTY DETAILS

- ▲ Floor Size 330m<sup>2</sup>
- ▲ Zoning Commercial

WEB REF: SCL258

Nadeema Chothia | 083 305 5354 | [nadeemac@spire.co.za](mailto:nadeemac@spire.co.za)

PROPERTY | WITH PURPOSE

**R44,880** per month excl. VAT

R136 per m<sup>2</sup>



[www.spire.co.za](http://www.spire.co.za)



## CONTACT US



**Nadeema Chothia**

Agent

☎ (011) 2685871

📱 083 305 5354

✉ [nadeemac@spire.co.za](mailto:nadeemac@spire.co.za)

WEB REF: SCL258

Nadeema Chothia | 083 305 5354 | [nadeemac@spire.co.za](mailto:nadeemac@spire.co.za)