

PROPERTY | WITH PURPOSE

R6,750 per month excl. VAT

R90 per m²



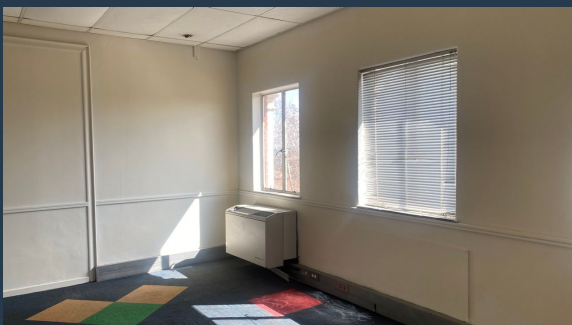
www.spire.co.za

TO LET

HANOVER SQAURE

7 Cnr. 7th Avenue & Hendrik Potgiete

75 Sqm office space to rent in Edenvale, Johannesburg. This space welcomes many organizations wanting to operate within corporate environments. They are other organizations in the building which will allow your organization to grow with good communication channels with your office neighbors. The building is guarded 24/7 ensuring that your personal things are protected. Edenvale is a busy city that ranges from middle-class areas such as Edenvale Central, Eastleigh and Illiondale, to the more upper-class areas such as Dowerglen and Edenglen. Edenvale Central (locally referred to as The Avenues) has seen high investment over the past few years in the form of upper-income clusters and townhouses. It lies about halfway between the O.R. Tambo...



WEB REF: SCL903

Nadeema Chothia | 083 305 5354 | nadeemac@spire.co.za

PROPERTY | WITH PURPOSE

R6,750 per month excl. VAT

R90 per m²



www.spire.co.za

OFFICE SPACE TO LET IN EDENVALE, JOHANNESBURG



PROPERTY DETAILS

▲ Open Parking	1.0	▲ Floor Size	75m ²
▲ Basement Parking	1.0	▲ Zoning	Commercial

WEB REF: SCL903

Nadeema Chothia | 083 305 5354 | nadeemac@spire.co.za

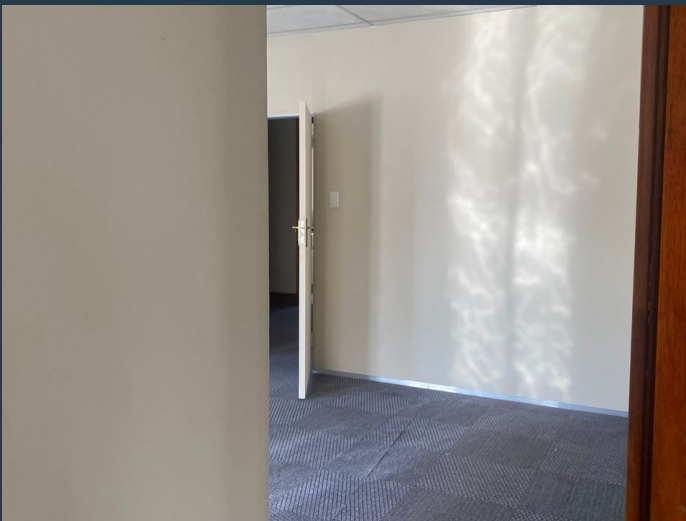
PROPERTY | WITH PURPOSE

R6,750 per month excl. VAT

R90 per m²



www.spire.co.za



CONTACT US



Nadeema Chothia

Agent

 (011) 2685871

 083 305 5354

 nadeemac@spire.co.za

WEB REF: SCL903

Nadeema Chothia | 083 305 5354 | nadeemac@spire.co.za