

PROPERTY | WITH PURPOSE

R20,000 per month excl. VAT

R80 per m²

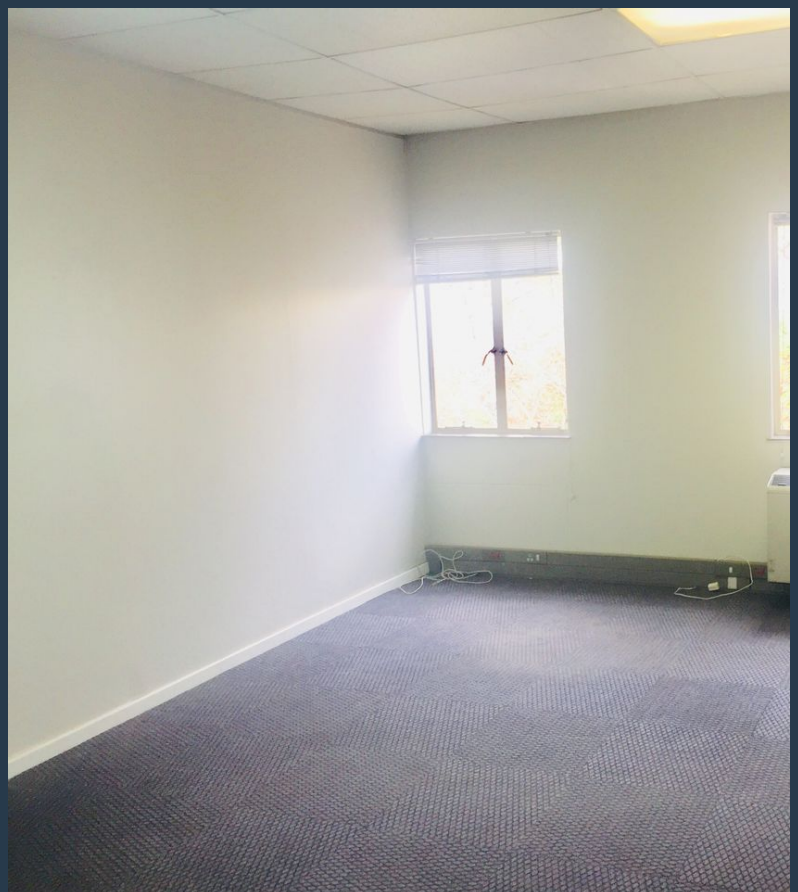


www.spire.co.za

TO LET



250 Sqm Office Space to rent in Hanover Square, Edenvale. This office space is situated on the First Floor of Building A. It consists of multiple partitioned offices, Shared kitchen, communal toilet on the same floor. This office space can be subdivided to tenants specification and for tenants who require smaller units, There's basement parking at R500 and open parking at R400 per month, 24-hour security available at all entrances of the building with a controlled remote system. Hanover Square is situated in the hearts of Edenvale with access to the main road and many major highways with public transport available in the area. We have been helping businesses just like yours to find their perfect commercial space. Our team of property...



WEB REF: SCL426

Nadeema Chothia | 083 305 5354 | nadeemac@spire.co.za

PROPERTY | WITH PURPOSE

R20,000 per month excl. VAT

R80 per m²



www.spire.co.za

OFFICE SPACE TO RENT HANOVER SQAURE, EDENVALE



PROPERTY DETAILS

▲ Security	Yes	▲ Floor Size	250m ²
▲ Air Conditioning	Yes	▲ Zoning	Commercial

WEB REF: SCL426

Nadeema Chothia | 083 305 5354 | nademac@spire.co.za

PROPERTY | WITH PURPOSE

R20,000 per month excl. VAT

R80 per m²



www.spire.co.za



CONTACT US



Nadeema Chothia

Agent

(011) 2685871

083 305 5354

nadeemac@spire.co.za

WEB REF: SCL426

Nadeema Chothia | 083 305 5354 | nadeemac@spire.co.za