

PROPERTY | WITH PURPOSE

R44,600 per month excl. VAT

R100 per m²

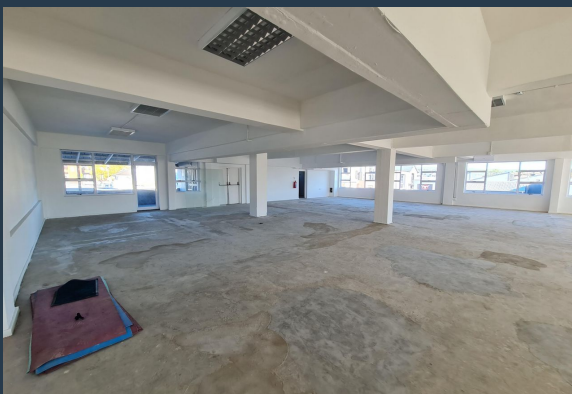


www.spire.co.za

TO LET



This 446 sqm office is situated on the first floor of the very popular Palm Grove Shopping Centre in Durbanville central. It is an amazing space that has been white boxed and ready for your new office configuration. The space offers two entrances, loads of windows with excellent natural light. Signage on the building is permitted adding extra advertising potential for the new tenant. Tenant Installation allowance on offer: One month of Nett Rental for each lease year subject to a minimum lease period of 3 years. Palm Grove centre is a busy retail centre that offers both office and retail space to let and it is situated on the corner of Church & Main Road in the heart of Durbanville and public transport is readily available in the...



WEB REF: CL2272

Chantel Georgiadis | 0845251014 | chantelg@spire.co.za

PROPERTY | WITH PURPOSE

R44,600 per month excl. VAT

R100 per m²



www.spire.co.za

446M² OFFICE TO LET IN DURBANVILLE CENTRAL



PROPERTY DETAILS

▲ Security	Yes	▲ Floor Size	446m ²
▲ Air Conditioning	Yes	▲ Zoning	Commercial

WEB REF: CL2272

Chantel Georgiadis | 0845251014 | chantelg@spire.co.za

PROPERTY | WITH PURPOSE

R44,600 per month excl. VAT

R100 per m²



www.spire.co.za



CONTACT US



Chantel Georgiadis

Non-Principal Property Practitioner

☎ (021) 6854020

📱 0845251014

✉ chantelg@spire.co.za



Kevin Hellyer

Candidate Property Practitioner

☎ (021) 6854020

📱 061 484 5578

✉ kevinh@spire.co.za

WEB REF: CL2272

Chantel Georgiadis | 0845251014 | chantelg@spire.co.za