

PROPERTY | WITH PURPOSE

R36,125 per month excl. VAT

R125 per m²



www.spire.co.za

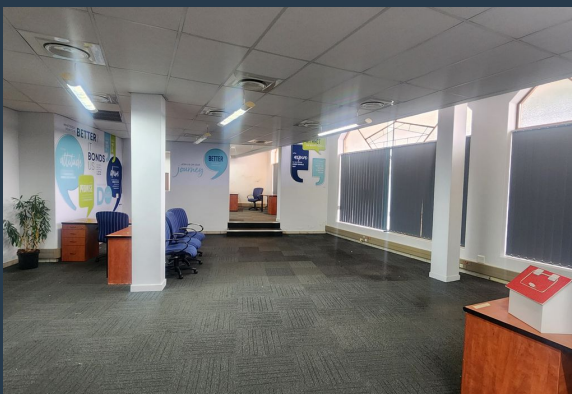
TO LET



LOWRY CORNER

14 Silverton road

Approx 289sqm of Ground floor Retail/Office space available for rental in Musgrave. Corner Silverton and Musgrave Road, Prime location. Full glass frontage which is ideal for a retail outlet or showroom. Back access from secure parking. Property has a kitchenette, separate offices and storeroom space otherwise the bulk is fairly open. Has secure front gate security plus 24-hour security at the complex. The location is on a corner with high foot traffic. Musgrave center next door has been a buzz of late with the center experiencing an increase in feet. Located on Musgrave makes the property have easy access to the N2 and N3, Close to Durban CBD and Adjacent areas like Glenwood and Morningside. 5-minute drive from Greyville racecourse....



WEB REF: SCL1835

Tim Tshabalala | 0711838716 | timt@spire.co.za

PROPERTY | WITH PURPOSE

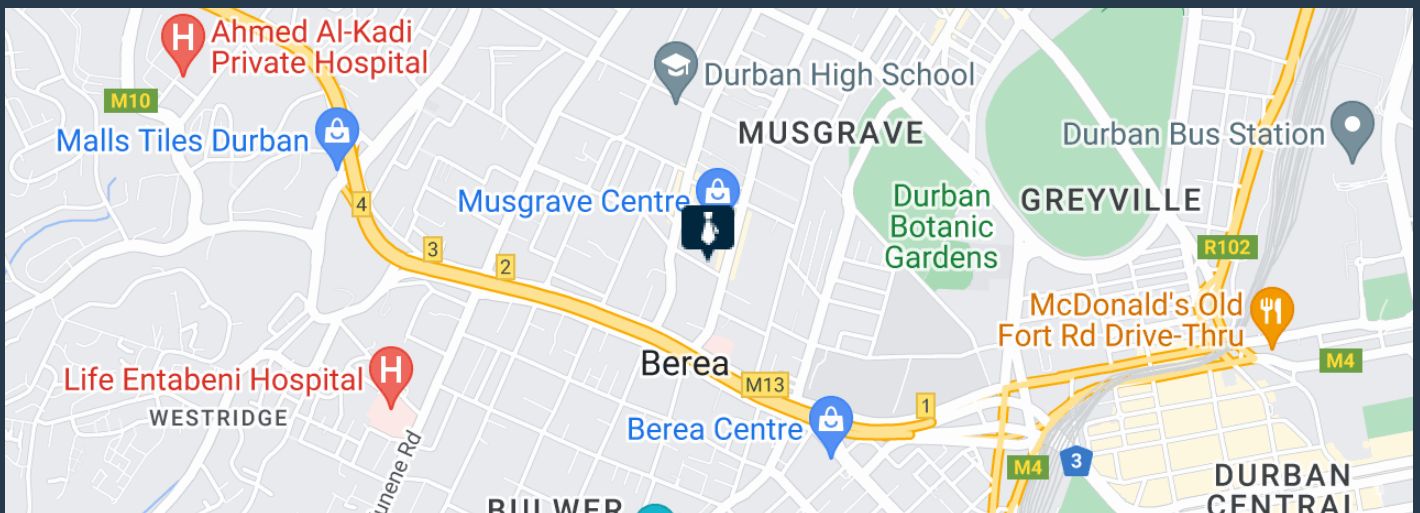
R36,125 per month excl. VAT

R125 per m²



www.spire.co.za

289SQM OFFICE SPACE/SHOWROOM AVAILABLE FOR RENTAL IN MUSGRAVE



PROPERTY DETAILS

▲ Security	Yes	▲ Open Parking	2.0	▲ Floor Size	289m ²
▲ Air Conditioning	Yes			▲ Land Size	5000
				▲ Zoning	Commercial

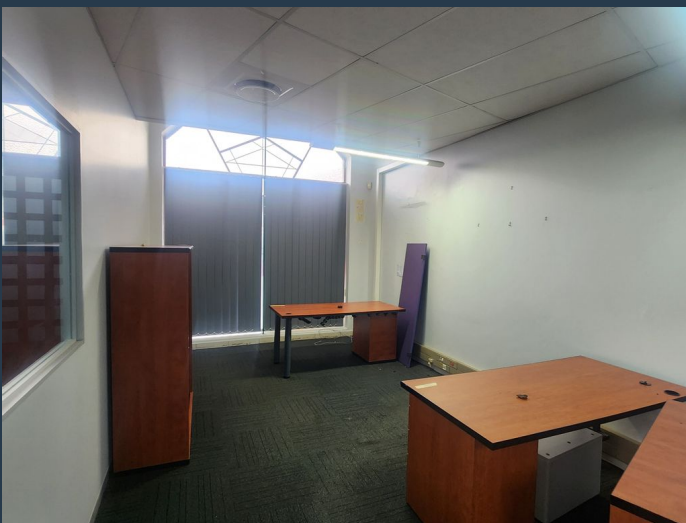
PROPERTY | WITH PURPOSE

R36,125 per month excl. VAT

R125 per m²



www.spire.co.za



CONTACT US



Tim Tshabalala
Agent

☎ (031) 5368243
📱 0711838716
✉ timt@spire.co.za



Mac Khoza
Agent

☎ (031) 5368243
📱 +27845722858
✉ mack@spire.co.za