

PROPERTY | WITH PURPOSE

R27,500 per month excl. VAT

R110 per m<sup>2</sup>

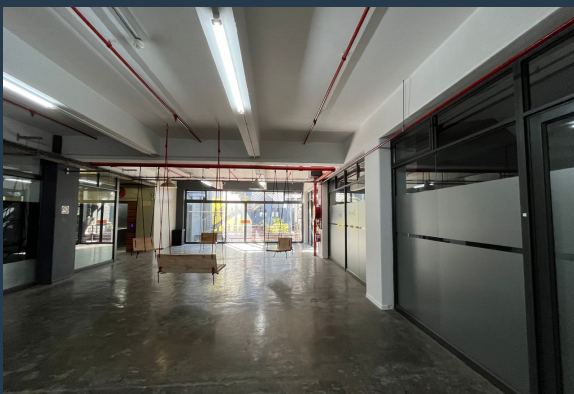


[www.spire.co.za](http://www.spire.co.za)

TO LET



250m<sup>2</sup> Office to Let, The Woodstock Exchange, Woodstock. Prime commercial opportunity in the Woodstock district. The office unit is located on the 2nd floor at The Woodstock Exchange, with a highly successful residential development just across the way. This space blends artistic flair with practical functionality, making it an ideal choice for businesses seeking a unique workspace. The Woodstock Exchange is well-known for its dynamic atmosphere and eclectic mix of creative professionals, providing an inspiring environment for innovation and collaboration. Enjoy easy access to major routes such as the N1, ensuring quick connections to the CBD and surrounding areas. Easy access to all major transport services. The property is equipped with...



WEB REF: SCL2050

Logan Du Pessis | 0736449934 | [logand@spire.co.za](mailto:logand@spire.co.za)

PROPERTY | WITH PURPOSE

**R27,500** per month excl. VAT

R110 per m<sup>2</sup>



[www.spire.co.za](http://www.spire.co.za)

## COMMERCIAL SPACE TO RENT IN WOODSTOCK | WOODSTOCK EXCHANGE



### PROPERTY DETAILS

- ▲ Floor Size 250m<sup>2</sup>
- ▲ Zoning Commercial

WEB REF: SCL2050

Logan Du Pessis | 0736449934 | [logand@spire.co.za](mailto:logand@spire.co.za)

PROPERTY | WITH PURPOSE

**R27,500** per month excl. VAT

R110 per m<sup>2</sup>



[www.spire.co.za](http://www.spire.co.za)



## CONTACT US



**Logan Du Pessis**

Agent

☎ (021) 6854020

📱 0736449934

✉ [logand@spire.co.za](mailto:logand@spire.co.za)



**Kevin Hellyer**

Candidate Property Practitioner

☎ (021) 6854020

📱 061 484 5578

✉ [kevinh@spire.co.za](mailto:kevinh@spire.co.za)

WEB REF: SCL2050

Logan Du Pessis | 0736449934 | [logand@spire.co.za](mailto:logand@spire.co.za)