

PROPERTY | WITH PURPOSE

R8,125 per month excl. VAT

R133 per m²

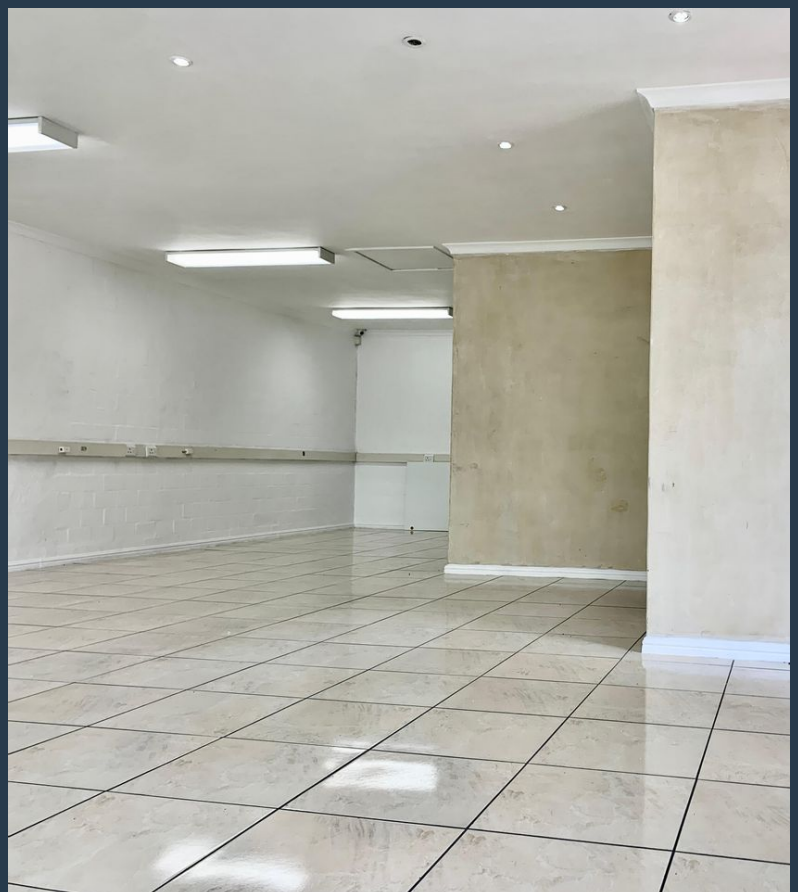


www.spire.co.za

TO LET



61 m² Office for Rent Westlake Business Park Step into this fully fitted 61 m² office space located on the 1st floor of the esteemed Westlake Business Park. This modern office is ready for immediate occupancy, offering a turnkey solution for your business needs. The space boasts a full kitchen, ensuring convenience for your team, and ample parking is available for all tenants, making commutes hassle-free. Renting office space at Westlake Business Park offers numerous advantages. Situated in a prime location, it provides excellent accessibility to major transport routes, ensuring easy commutes for employees and clients alike. The park is known for its secure, professional environment, attracting a diverse range of businesses, from...



WEB REF: SCL2031

Logan Du Pessis | 0736449934 | logand@spire.co.za

PROPERTY | WITH PURPOSE

R8,125 per month excl. VAT

R133 per m²



www.spire.co.za

61 M² OFFICE FOR RENT WESTLAKE BUSINESS PARK



PROPERTY DETAILS

- ▲ Floor Size 61m²
- ▲ Zoning Commercial

WEB REF: SCL2031

Logan Du Pessis | 0736449934 | logand@spire.co.za

PROPERTY | WITH PURPOSE

R8,125 per month excl. VAT

R133 per m²



www.spire.co.za



CONTACT US



Logan Du Pessis

Agent

☎ (021) 6854020

📱 0736449934

✉ logand@spire.co.za



Kevin Hellyer

Candidate Property Practitioner

☎ (021) 6854020

📱 061 484 5578

✉ kevinh@spire.co.za

WEB REF: SCL2031

Logan Du Pessis | 0736449934 | logand@spire.co.za