

PROPERTY | WITH PURPOSE

R38,700 per month excl. VAT

R165 per m²



www.spire.co.za

TO LET



SILVERWOOD

9 Silverwood Close

235 m² office space to rent in the Southern Suburbs at the Silverwood Close office park. A stone throw from the Ou Kaapse Weg highway. You get a good glance at the stunning mountain views, great sunlight. If you a user that loves the mountain and bike rides for a quick getaway, this office space is for you. The Steenberg House has communal toilets, security access control and telecom for any walk ins. This office space is mainly open plan, partitioned offices ready fitted out with aircon and a boardroom. The office can be re-configured to the new tenant's specifications. Silverwood has great amenities such as the Pollsmoor Pick N Pay, Virgin active gym around the corner at Westlake business park and a new Checkers up for development in the...



WEB REF: CL4083

Logan Du Pessis | 0736449934 | logand@spire.co.za

PROPERTY | WITH PURPOSE

R38,700 per month excl. VAT

R165 per m²



www.spire.co.za

OFFICE SPACE TO RENT IN THE SOUTHERN SUBURBS// STEENBERG...



PROPERTY DETAILS

▲ Security	Yes	▲ Open Parking	7.0	▲ Floor Size	235m ²
▲ Air Conditioning	Yes	▲ Basement Parking	4.0	▲ Land Size	235
				▲ Zoning	Commercial

WEB REF: CL4083

Logan Du Pessis | 0736449934 | logand@spire.co.za

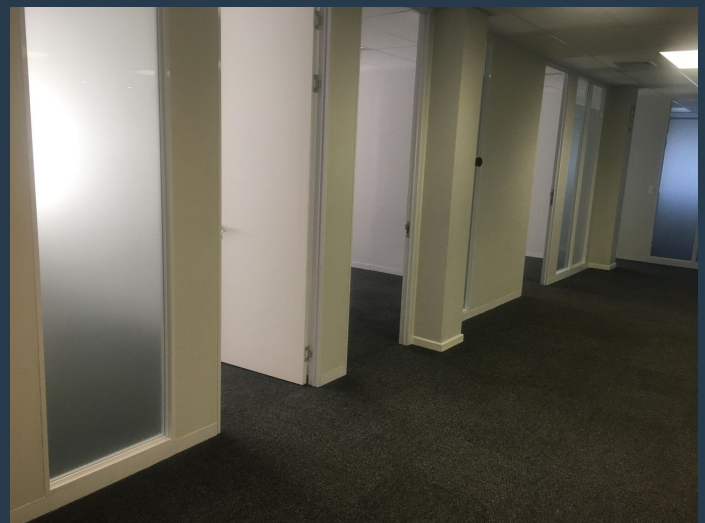
PROPERTY | WITH PURPOSE

R38,700 per month excl. VAT

R165 per m²



www.spire.co.za



CONTACT US



Logan Du Pessis

Agent

☎ (021) 6854020

📱 0736449934

✉ logand@spire.co.za



Kevin Hellyer

Candidate Property Practitioner

☎ (021) 6854020

📱 061 484 5578

✉ kevinh@spire.co.za

WEB REF: CL4083

Logan Du Pessis | 0736449934 | logand@spire.co.za