

PROPERTY | WITH PURPOSE

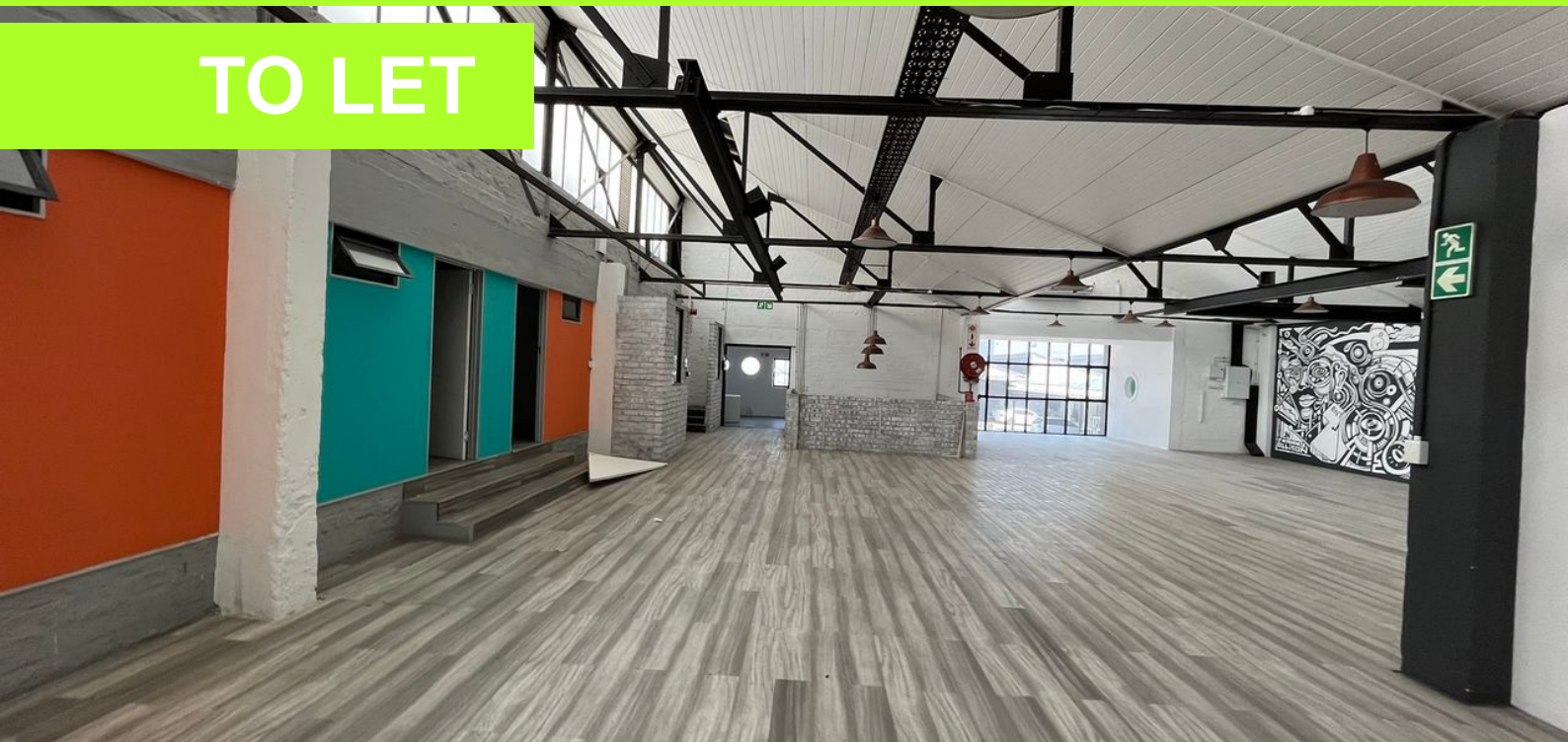
R196,200 per month excl. VAT

R98 per m²

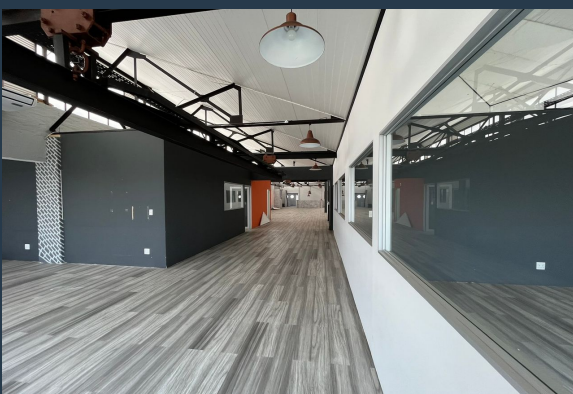
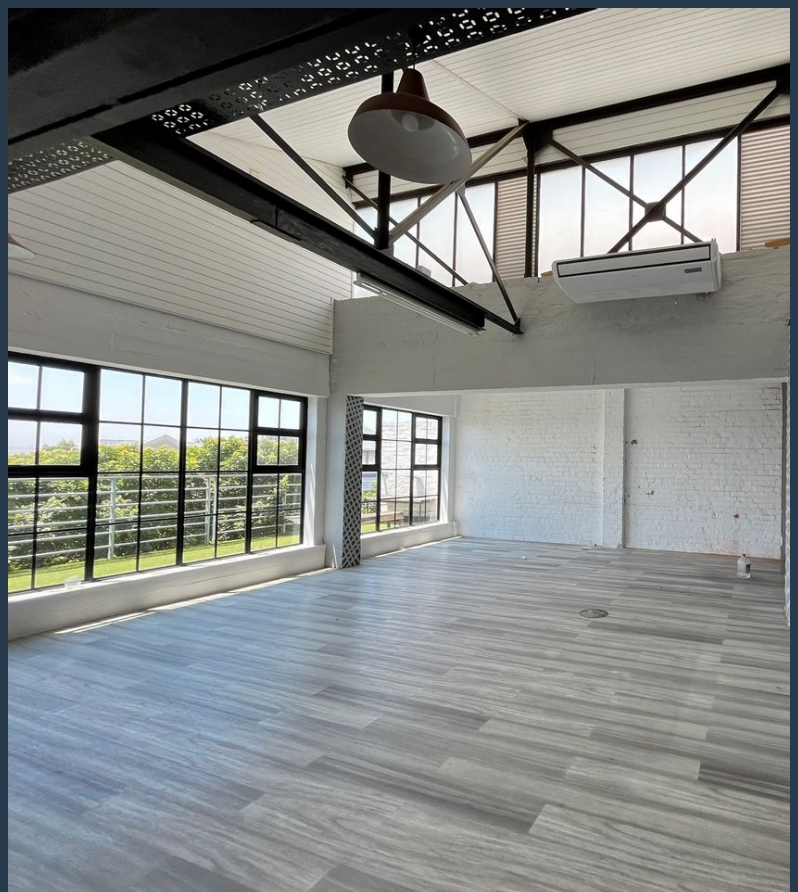


www.spire.co.za

TO LET



2000 square meters of commercial space available to rent in Salt River. Of the 2000 square meters available to rent, 700 of that 2000 sqm is parking space and is included in the gross rental. This unit comes fitted out with bathrooms and laminate flooring. With a central location in Salt River, this unit is perfect for design academies, creative colleges, call centers or large office space which requires plenty of parking bays. We have been helping businesses just like yours to find their perfect commercial retail or industrial space. Our team of property professionals are ready to find your perfect space. We have a longstanding relationship with the top property funds and property management companies in the city. We feature...



WEB REF: SCL1571

Logan Du Pessis | 0736449934 | logand@spire.co.za

PROPERTY | WITH PURPOSE

R196,200 per month excl. VAT

R98 per m²



www.spire.co.za

COMMERCIAL SPACE TO RENT IN SALT RIVER



PROPERTY DETAILS

- ▲ Floor Size 2000m²
- ▲ Zoning Commercial

WEB REF: SCL1571

Logan Du Pessis | 0736449934 | logand@spire.co.za

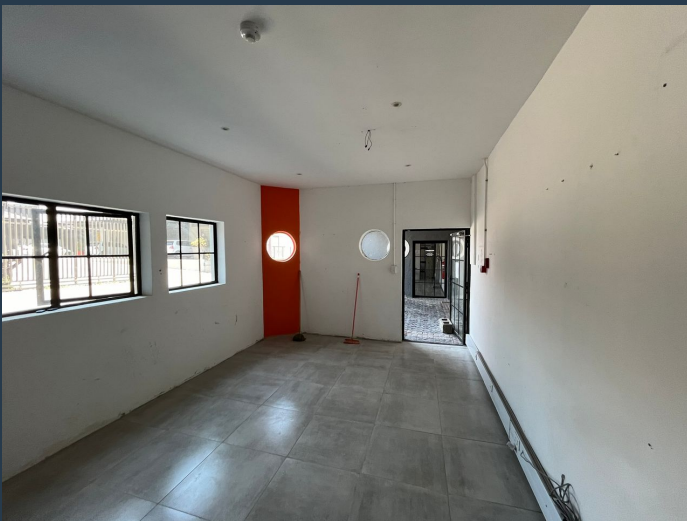
PROPERTY | WITH PURPOSE

R196,200 per month excl. VAT

R98 per m²



www.spire.co.za



CONTACT US



Logan Du Pessis

Agent

☎ (021) 6854020

📱 0736449934

✉ logand@spire.co.za



Kevin Hellyer

Candidate Property Practitioner

☎ (021) 6854020

📱 061 484 5578

✉ kevinh@spire.co.za

WEB REF: SCL1571

Logan Du Pessis | 0736449934 | logand@spire.co.za