

PROPERTY | WITH PURPOSE

R12,000 per month excl. VAT

R200 per m²

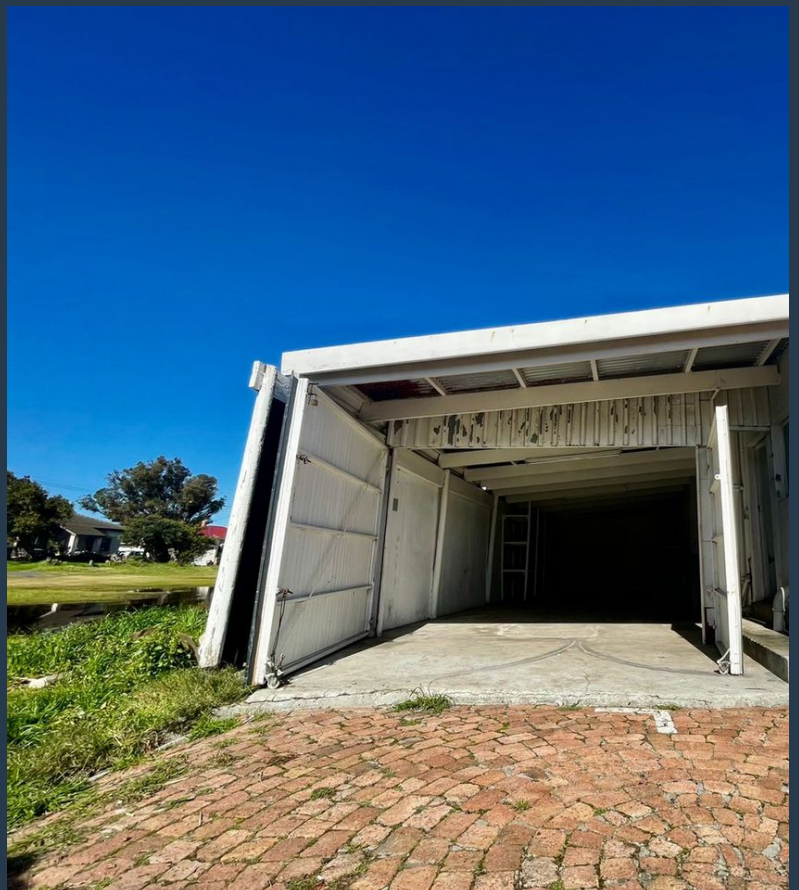


www.spire.co.za

TO LET



60 m² Industrial Space for Rent in Retreat. Looking for a versatile and efficient industrial space? This 60 m² ground floor unit in Retreat is ready for immediate occupancy. Featuring a partitioned office, water supply, and ample parking for tenants, this space is ideal for various business needs. Whether you're expanding your operations or starting a new venture, this well-maintained and accessible unit offers the perfect setting for productivity and growth. Why Rent in Retreat: Renting in Retreat offers a strategic advantage with its prime location and excellent infrastructure. Retreat is known for its thriving industrial community, providing businesses with access to a network of suppliers, clients, and partners. The area is...



WEB REF: SCL2023

Logan Du Pessis | 0736449934 | logand@spire.co.za

PROPERTY | WITH PURPOSE

R12,000 per month excl. VAT

R200 per m²



www.spire.co.za

60M2 INDUSTRIAL SPACE FOR RENT RETREAT



PROPERTY DETAILS

▲ Floor Size	60m ²
▲ Zoning	Commercial

WEB REF: SCL2023

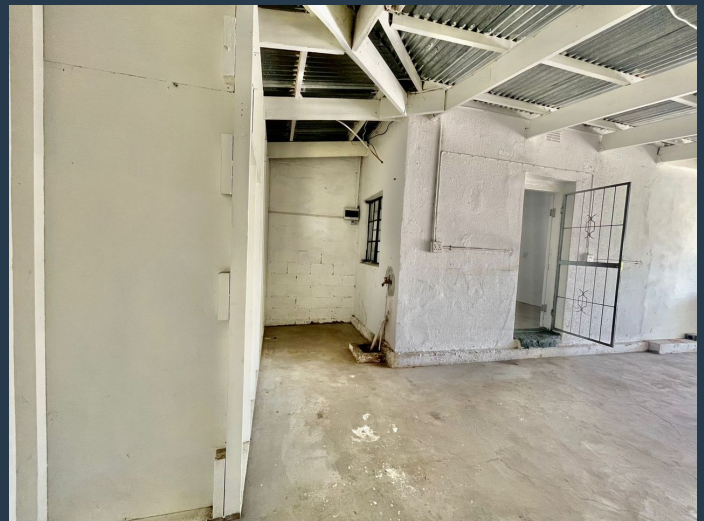
Logan Du Pessis | 0736449934 | logand@spire.co.za

PROPERTY | WITH PURPOSE

R12,000 per month excl. VAT
R200 per m²



www.spire.co.za



CONTACT US



Logan Du Pessis
Agent

📞 (021) 6854020
📱 0736449934
✉ logand@spire.co.za



Kevin Hellyer
Candidate Property Practitioner

📞 (021) 6854020
📱 061 484 5578
✉ kevinh@spire.co.za