

PROPERTY | WITH PURPOSE

**R57,000** per month excl. VAT

R190 per m<sup>2</sup>

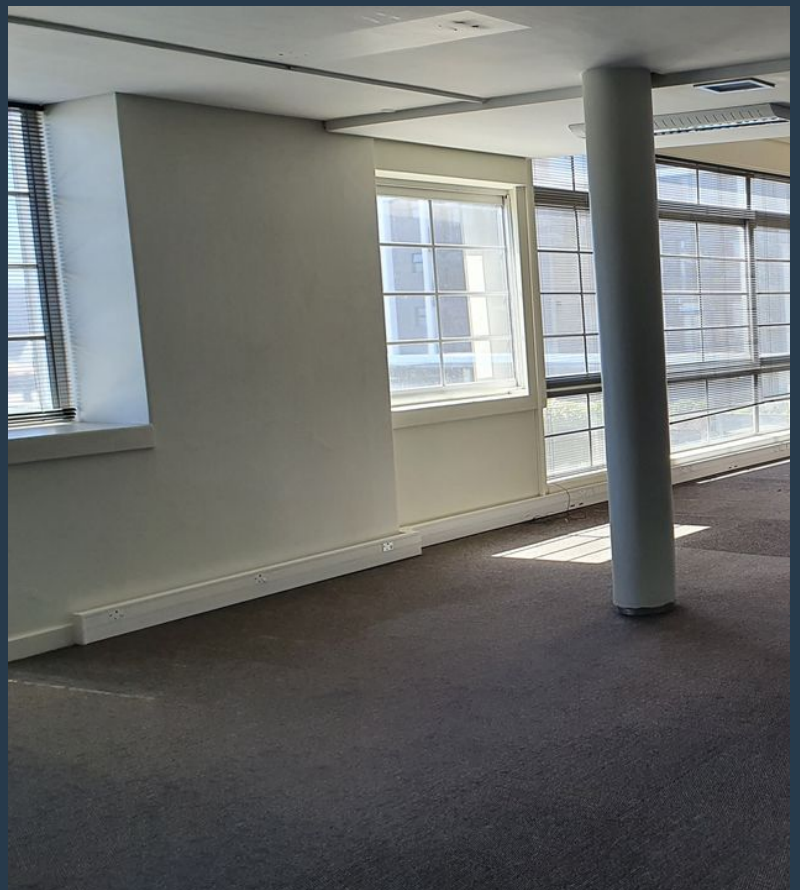


[www.spire.co.za](http://www.spire.co.za)

**TO LET**



300 m<sup>2</sup> Office to rent in Green Point. The office enjoys 24 hour security, and full access control. Basement parking bays are made available to tenants at a monthly rate of R1,750. This unit is situated in one of Green Points most attractive business hubs, the Sovereign Quay building, which is optimally situated in the heart of Somerset Road. This location boasts a stylish and energetic atmosphere, which is just part of what makes it an area of choice for so many. Sovereign Quay offers a range of office spaces designed to accommodate various business needs. From smaller suites suitable for startups and boutique firms to larger, open-plan spaces ideal for established companies, the offices at Sovereign Quay are flexible and can be tailored...



WEB REF: CL1543

Amy Steyn | 061 1257879 | [amys@spire.co.za](mailto:amys@spire.co.za)

PROPERTY | WITH PURPOSE

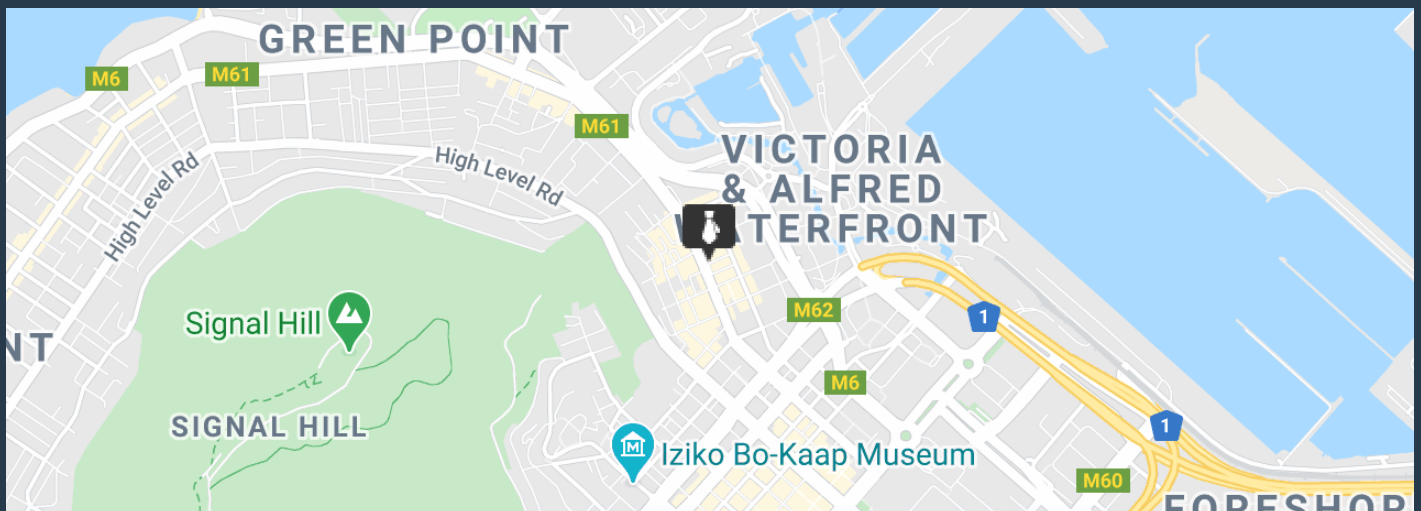
**R57,000** per month excl. VAT

R190 per m<sup>2</sup>



[www.spire.co.za](http://www.spire.co.za)

**300 M<sup>2</sup> OFFICE SPACE TO RENT GREEN POINT | SOVEREIGN QUAY**



**PROPERTY DETAILS**

▲ Security	Yes	▲ Basement Parking	9.0	▲ Floor Size	300m <sup>2</sup>
▲ Air Conditioning	Yes			▲ Land Size	300
				▲ Zoning	Commercial

WEB REF: CL1543

Amy Steyn | 061 1257879 | [amys@spire.co.za](mailto:amys@spire.co.za)

PROPERTY | WITH PURPOSE

**R57,000** per month excl. VAT

**R190** per m<sup>2</sup>



[www.spire.co.za](http://www.spire.co.za)



## CONTACT US



**Amy Steyn**

Agent

☎ (021) 6854020

📱 061 1257879

✉ [amys@spire.co.za](mailto:amys@spire.co.za)



**Kevin Hellyer**

Candidate Property Practitioner

☎ (021) 6854020

📱 061 484 5578

✉ [kevinh@spire.co.za](mailto:kevinh@spire.co.za)

WEB REF: CL1543

Amy Steyn | 061 1257879 | [amys@spire.co.za](mailto:amys@spire.co.za)