

PROPERTY | WITH PURPOSE

**R58,190** per month excl. VAT

R230 per m<sup>2</sup>

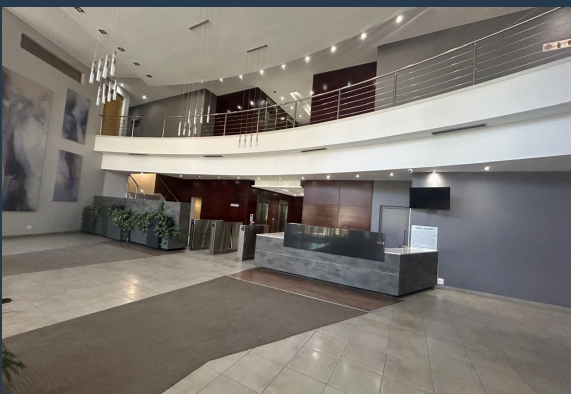
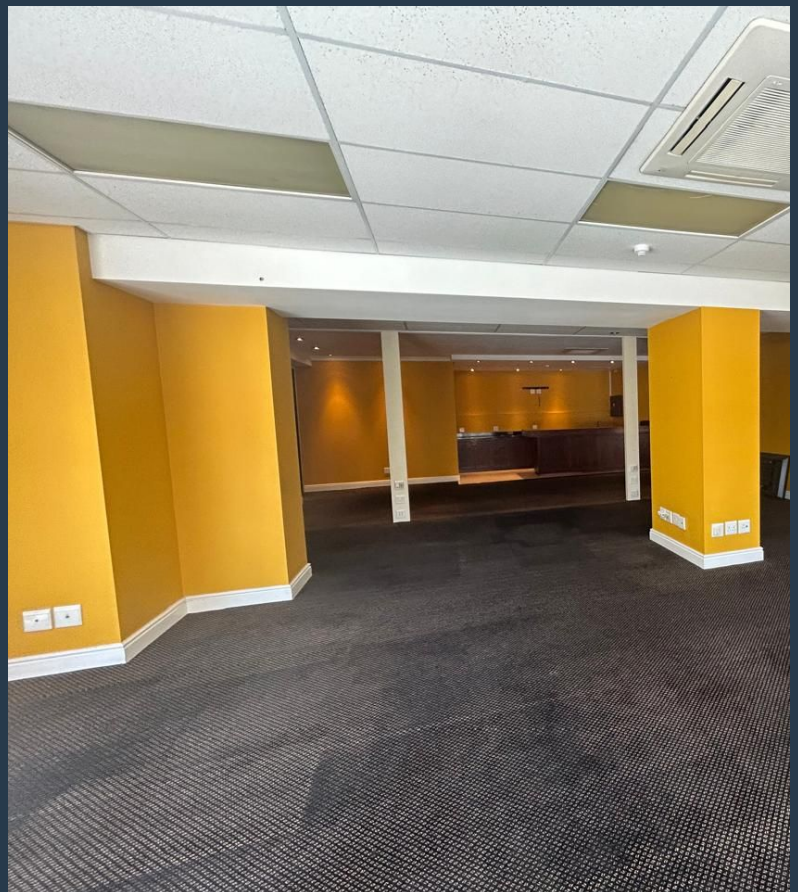


[www.spire.co.za](http://www.spire.co.za)

**TO LET**



253 m<sup>2</sup> Office to rent in Claremont. This fully-fitted, first-floor office suite in the iconic Intaba Building offers the perfect balance of style, efficiency, and convenience in Claremont's bustling business district. Whether you're a growing company or an established firm seeking a fresh workspace, this office provides the ideal environment to thrive. A spacious reception and waiting area welcomes your team and clients with a professional yet inviting atmosphere. To the right, a fully equipped kitchen ensures staff can enjoy their breaks in comfort or even host informal meetings over coffee. Need a dedicated space for brainstorming, presentations, or strategy sessions? The large boardroom near the entrance offers privacy and...



WEB REF: SCL2221

Amy Steyn | 061 1257879 | [amys@spire.co.za](mailto:amys@spire.co.za)

PROPERTY | WITH PURPOSE

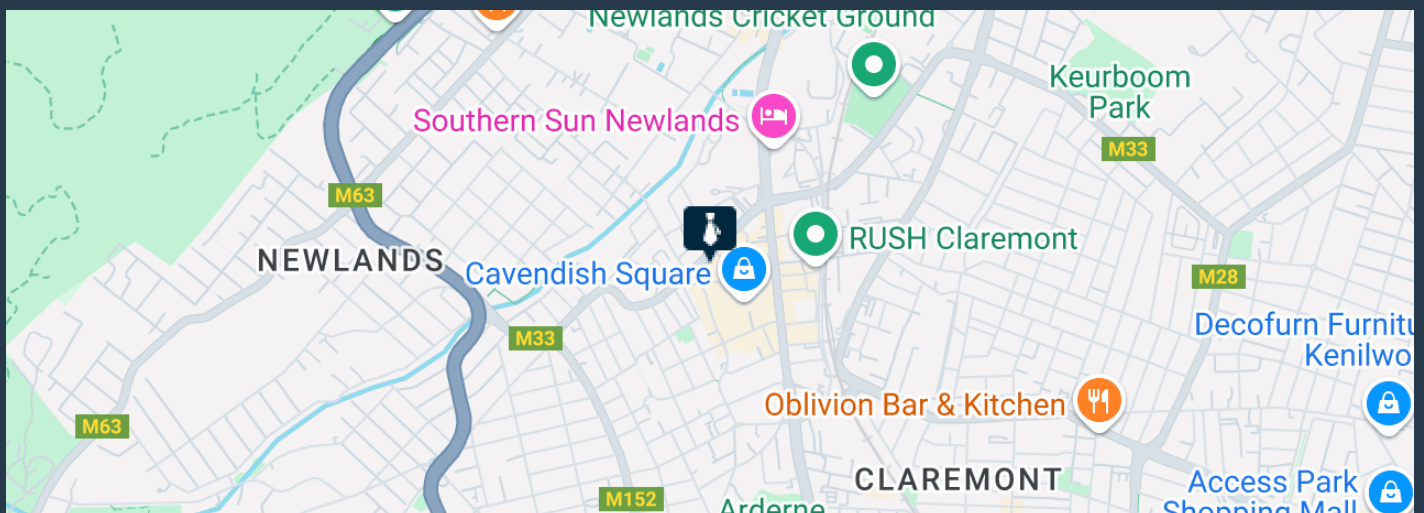
**R58,190** per month excl. VAT

R230 per m<sup>2</sup>



[www.spire.co.za](http://www.spire.co.za)

## 253 M<sup>2</sup> OFFICE TO RENT CLAREMONT | INTABA BUILDING



### PROPERTY DETAILS

▲ Security	Yes	▲ Floor Size	253m <sup>2</sup>
▲ Air Conditioning	Yes	▲ Land Size	253
		▲ Zoning	Commercial

WEB REF: SCL2221

Amy Steyn | 061 1257879 | [amys@spire.co.za](mailto:amys@spire.co.za)

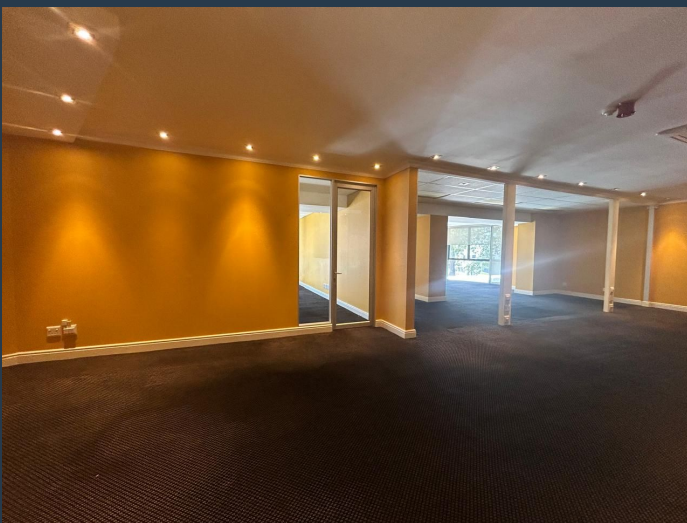
PROPERTY | WITH PURPOSE

**R58,190** per month excl. VAT

R230 per m<sup>2</sup>



[www.spire.co.za](http://www.spire.co.za)



## CONTACT US



**Amy Steyn**

Agent

☎ (021) 6854020

📱 061 1257879

✉ [amys@spire.co.za](mailto:amys@spire.co.za)



**Kevin Hellyer**

Candidate Property Practitioner

☎ (021) 6854020

📱 061 484 5578

✉ [kevinh@spire.co.za](mailto:kevinh@spire.co.za)