

PROPERTY | WITH PURPOSE

R483,600 per month excl. VAT

R195 per m²

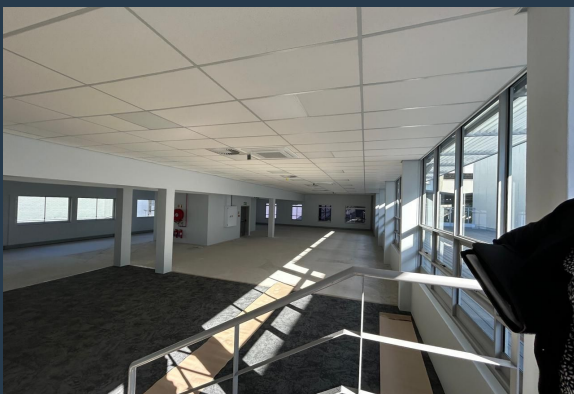
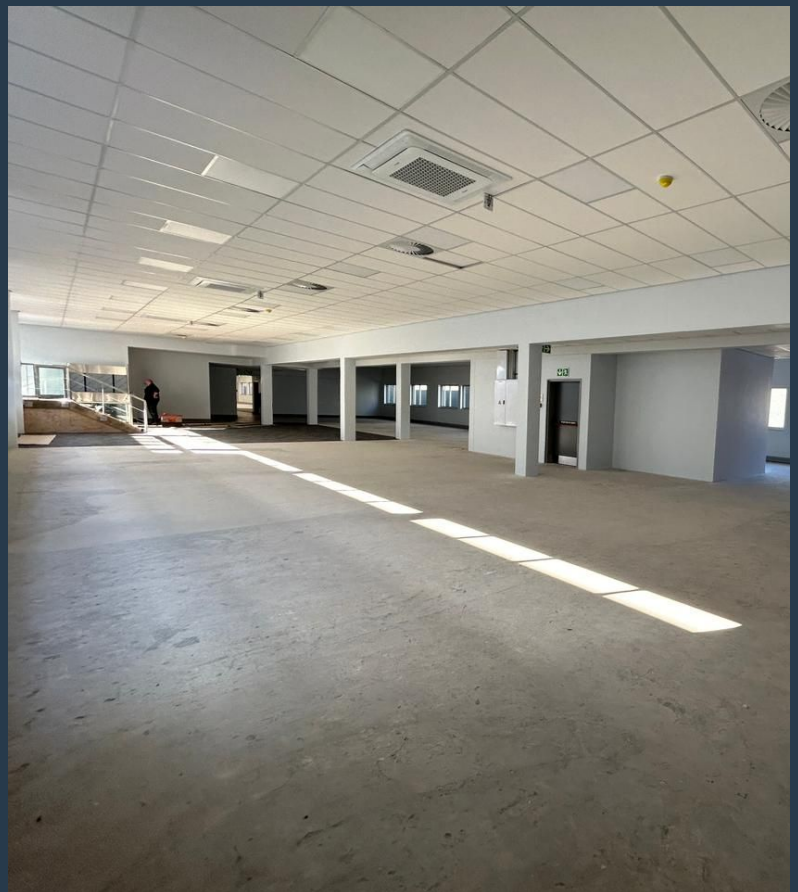


www.spire.co.za

TO LET



2,480 m² Office to rent in Claremont. 1st and 2nd floor offices. This spacious office extends over two floors, offering ample room for various configurations to suit your business needs. The space is ready for a full tenant fit-out, with an allowance provided to customize the office to your specific requirements. A large patio area of 178 m² is available for staff to enjoy breaks and informal meetings, and the office is provisioned for a full kitchen, enhancing the convenience and functionality of the workspace. The Galleri Building is conveniently located close to public transport routes and offers ample parking, ensuring ease of access for both employees and clients. Back up power available. Renting offices in Claremont provides...



WEB REF: SCL1931

Amy Steyn | 061 1257879 | amys@spire.co.za

PROPERTY | WITH PURPOSE

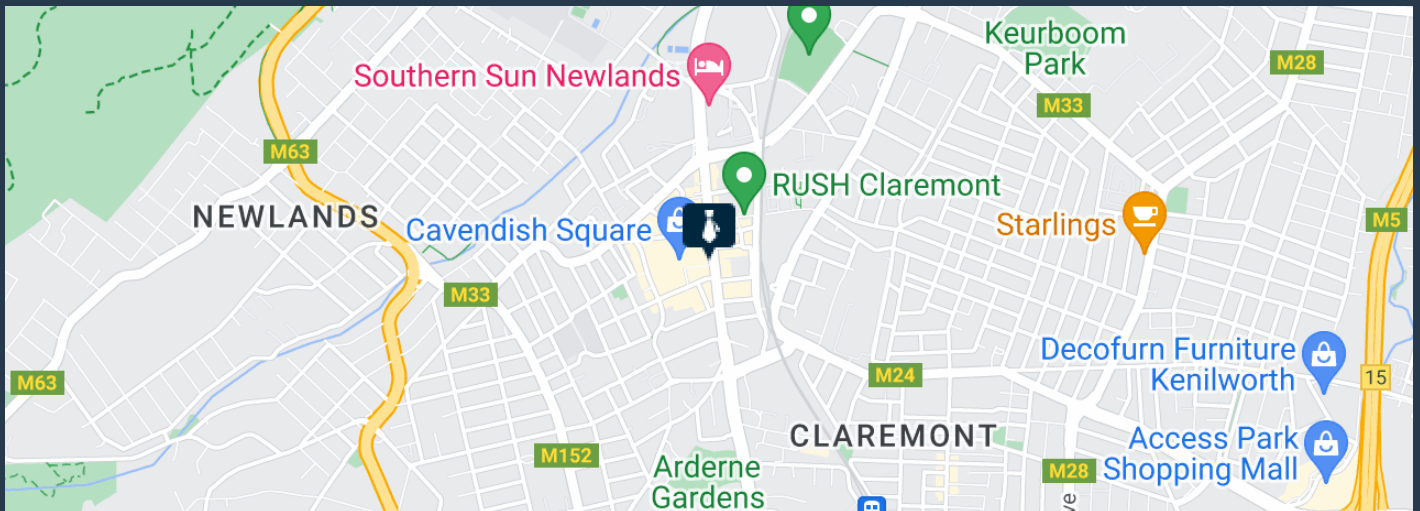
R483,600 per month excl. VAT

R195 per m²



www.spire.co.za

OFFICE SPACE TO RENT CLAREMONT | GALLERIA



PROPERTY DETAILS

▲ Security	Yes	▲ Floor Size	2480m ²
▲ Air Conditioning	Yes	▲ Land Size	2480
		▲ Zoning	Commercial

WEB REF: SCL1931

Amy Steyn | 061 1257879 | amys@spire.co.za

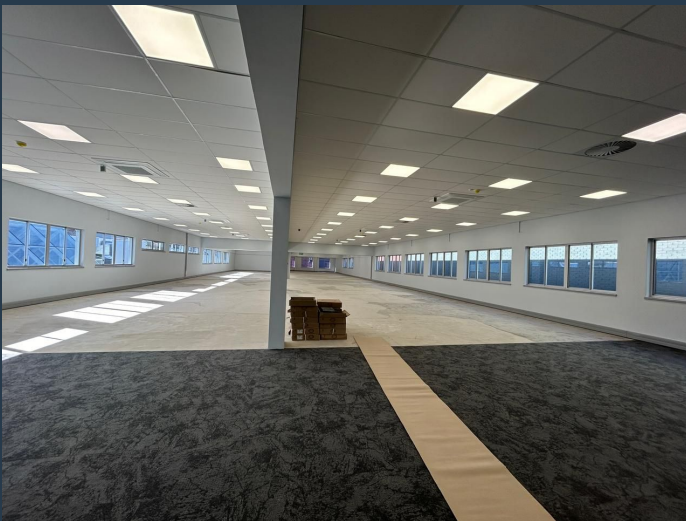
PROPERTY | WITH PURPOSE

R483,600 per month excl. VAT

R195 per m²



www.spire.co.za



CONTACT US



Amy Steyn

Agent

☎ (021) 6854020

📱 061 1257879

✉ amys@spire.co.za



Kevin Hellyer

Candidate Property Practitioner

☎ (021) 6854020

📱 061 484 5578

✉ kevinh@spire.co.za

WEB REF: SCL1931

Amy Steyn | 061 1257879 | amys@spire.co.za