

PROPERTY | WITH PURPOSE

R20,640 per month excl. VAT

R160 per m²

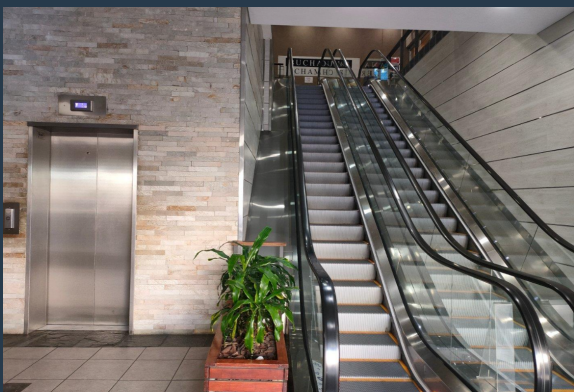


www.spire.co.za

TO LET



129 m² Office to Rent Claremont. Spacious Office With Mountain views in well Known Buchanan Chambers. Buchanan Chambers, situated in central Claremont, is a large mixed use building, ideally located across the road from Cavendish Square and major transport routes. The building is well maintained and offers manned security as well Virgin Active and a variety of restaurants on your doorstep. This top floor open plan unit is in excellent condition and ready for a tenant to move in, with a fitted kitchen, brand new laminate flooring and beautiful mountain views. Parking to be sourced next door at Cavendish at R1,100 per bay or a pay as you go system. Buchanan Chambers is ideally located in Claremont, a thriving business hub known for its...



WEB REF: SCL1097

Amy Steyn | 061 1257879 | amys@spire.co.za

PROPERTY | WITH PURPOSE

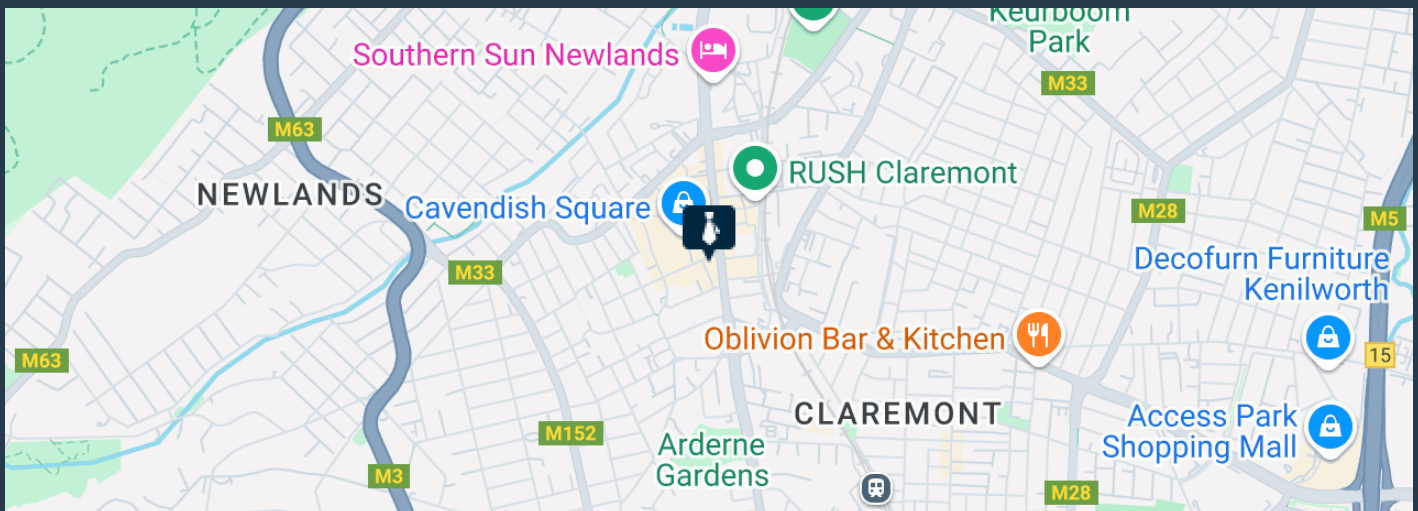
R20,640 per month excl. VAT

R160 per m²



www.spire.co.za

OFFICE SPACE TO RENT IN CLAREMONT | BUCHANAN'S CHAMBERS



PROPERTY DETAILS

▲ Security	Yes	▲ Floor Size	129m ²
▲ Air Conditioning	Yes	▲ Land Size	129
		▲ Zoning	Commercial

WEB REF: SCL1097

Amy Steyn | 061 1257879 | amys@spire.co.za

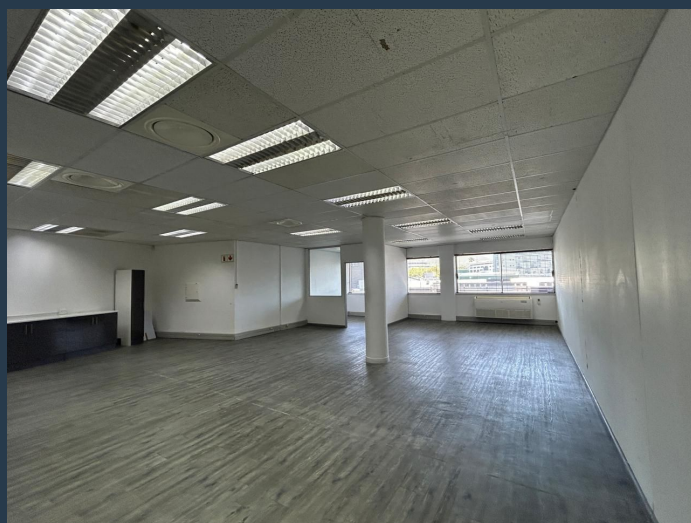
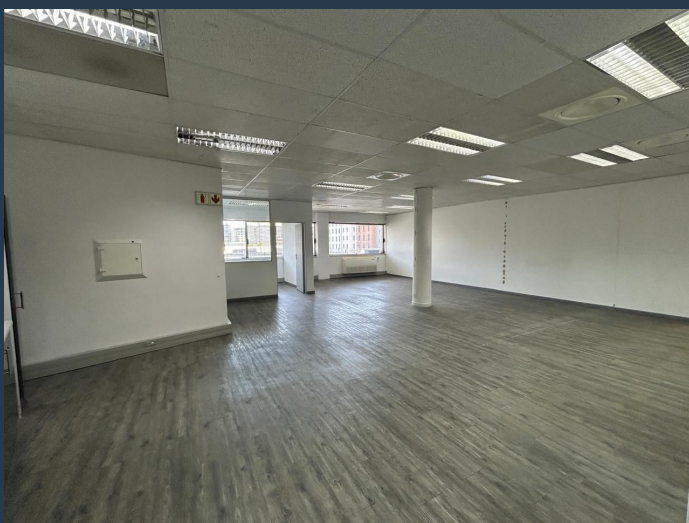
PROPERTY | WITH PURPOSE

R20,640 per month excl. VAT

R160 per m²



www.spire.co.za



CONTACT US



Amy Steyn
Agent

☎ (021) 6854020
📱 061 1257879
✉ amys@spire.co.za



Kevin Hellyer
Candidate Property Practitioner

☎ (021) 6854020
📱 061 484 5578
✉ kevinh@spire.co.za

WEB REF: SCL1097

Amy Steyn | 061 1257879 | amys@spire.co.za