

PROPERTY | WITH PURPOSE

**R67,990** per month excl. VAT

**R130** per m<sup>2</sup>



[www.spire.co.za](http://www.spire.co.za)

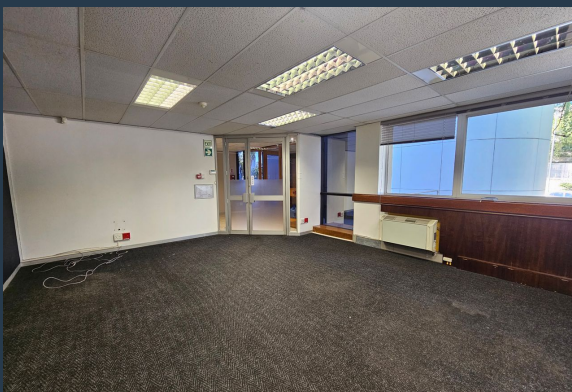
**TO LET**



## CORPORATE PLACE

13 Mispel Road

523 m<sup>2</sup> Office to Rent in Tygervally. Fitted out offices with possible sub-divisions. The space has an existing fit out, and ready for a new tenant. Corporate Place is located in the heart of Tygervally, a key commercial hub in Cape Town's northern suburbs. The area is home to corporate offices, financial institutions, and a variety of business services. The building's proximity to the N1 freeway allows for quick access to Bellville, Century City, and Cape Town's CBD. Public transport stations are within walking distance, making it a convenient location for employees and clients. Surrounding amenities include retail centers, restaurants, and essential business services. Tygervally Shopping Centre and Willowbridge Mall are nearby,...



WEB REF: SCL2267

Chantel Georgiadis | 0845251014 | [chantelg@spire.co.za](mailto:chantelg@spire.co.za)



PROPERTY | WITH PURPOSE

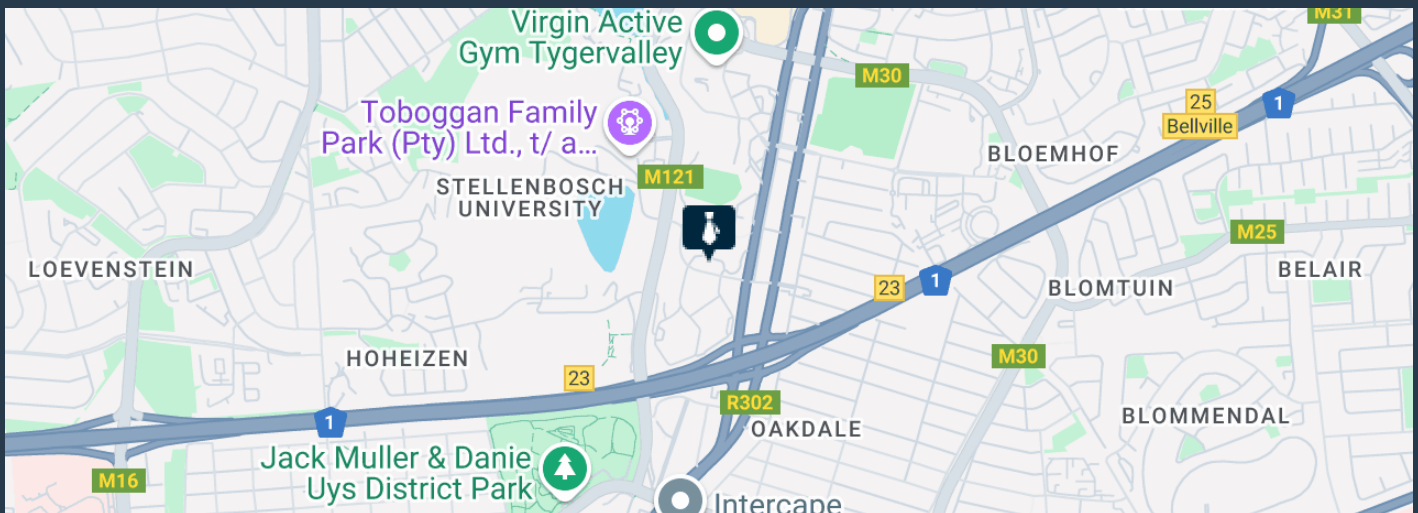
**R67,990** per month excl. VAT

**R130** per m<sup>2</sup>



[www.spire.co.za](http://www.spire.co.za)

## 523 M<sup>2</sup> OFFICE TO RENT TYGERVALLEY - CORPORATE PLACE



### PROPERTY DETAILS

▲ Security	Yes	▲ Basement Parking	10.0	▲ Floor Size	523m <sup>2</sup>
▲ Air Conditioning	Yes			▲ Land Size	523
				▲ Zoning	Commercial

WEB REF: SCL2267

Chantel Georgiadis | 0845251014 | [chantelg@spire.co.za](mailto:chantelg@spire.co.za)



PROPERTY | WITH PURPOSE

**R67,990** per month excl. VAT  
R130 per m<sup>2</sup>



[www.spire.co.za](http://www.spire.co.za)



## CONTACT US



**Chantel Georgiadis**  
Non-Principal Property Practitioner

📞 (021) 6854020  
📱 0845251014  
✉ [chantelg@spire.co.za](mailto:chantelg@spire.co.za)



**Kevin Hellyer**  
Candidate Property Practitioner

📞 (021) 6854020  
📱 061 484 5578  
✉ [kevinh@spire.co.za](mailto:kevinh@spire.co.za)

WEB REF: SCL2267

Chantel Georgiadis | 0845251014 | [chantelg@spire.co.za](mailto:chantelg@spire.co.za)