

PROPERTY | WITH PURPOSE

R101,200 per month excl. VAT

R220 per m²

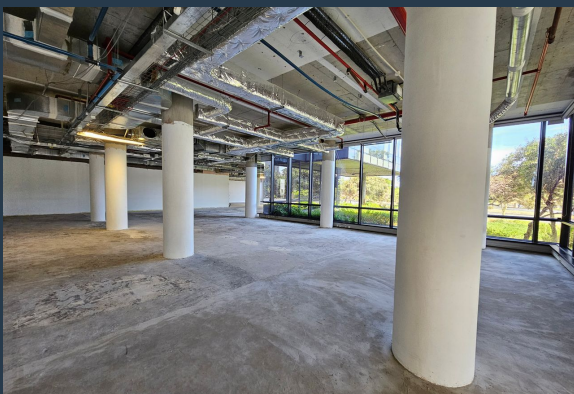


www.spire.co.za

TO LET



460 m² Office space to rent in Tygervalley. Fitted out space located on the 4th floor. This office is housed within a 4 Star Green Star-rated building, designed to meet the demands of today's dynamic and eco-conscious businesses. Situated on Carl Cronje Drive, one of Tygervalley's most prominent commercial thoroughfares, this office offers not only functional, spacious interiors but also a location that is highly accessible and close to a wide range of amenities. The office spans a portion of the 4th floor of the building, offering ample room for a wide range of business operations. The space is currently designed to accommodate a single tenant. The floor has been white-boxed and allows the new tenant to customize their workspace. An...



WEB REF: CL3627

Chantel Georgiadis | 0845251014 | chantelg@spire.co.za

PROPERTY | WITH PURPOSE

R101,200 per month excl. VAT

R220 per m²



www.spire.co.za

460 M² OFFICE TO RENT TYGERVALLEY | GLACIER PLACE



PROPERTY DETAILS

▲ Security	Yes	▲ Basement Parking	10.0	▲ Floor Size	460m ²
▲ Air Conditioning	Yes			▲ Land Size	460
				▲ Zoning	Commercial

WEB REF: CL3627

Chantel Georgiadis | 0845251014 | chantelg@spire.co.za

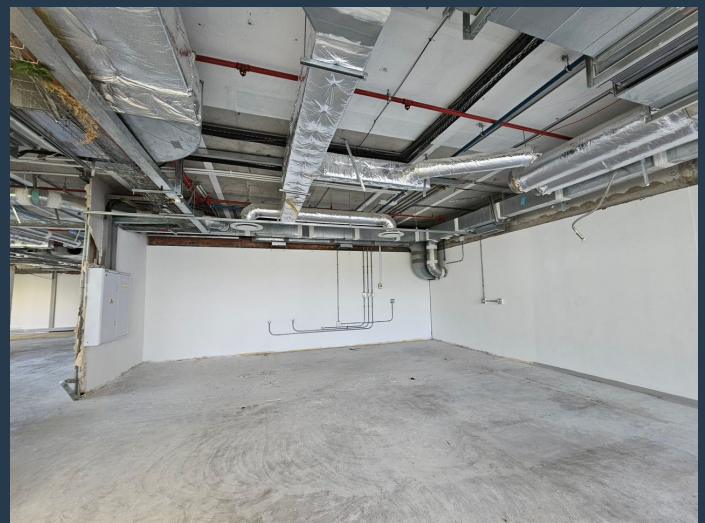
PROPERTY | WITH PURPOSE

R101,200 per month excl. VAT

R220 per m²



www.spire.co.za



CONTACT US



Chantel Georgiadis
Non-Principal Property Practitioner

☎ (021) 6854020
📱 0845251014
✉ chantelg@spire.co.za



Kevin Hellyer
Candidate Property Practitioner

☎ (021) 6854020
📱 061 484 5578
✉ kevinh@spire.co.za