

PROPERTY | WITH PURPOSE

R34,650 per month excl. VAT

R175 per m²

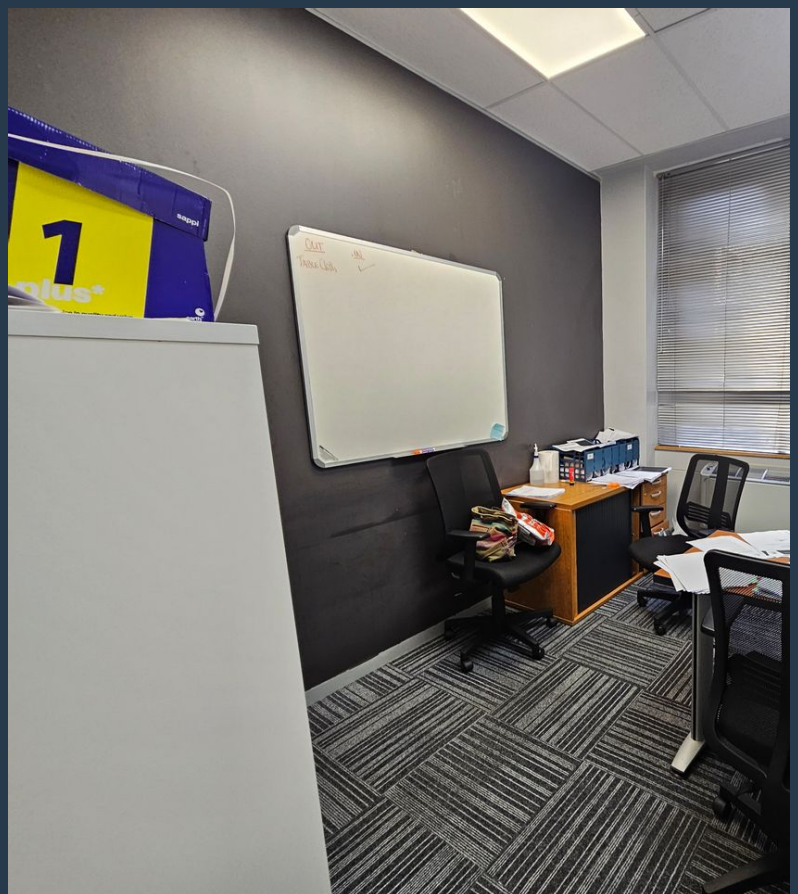
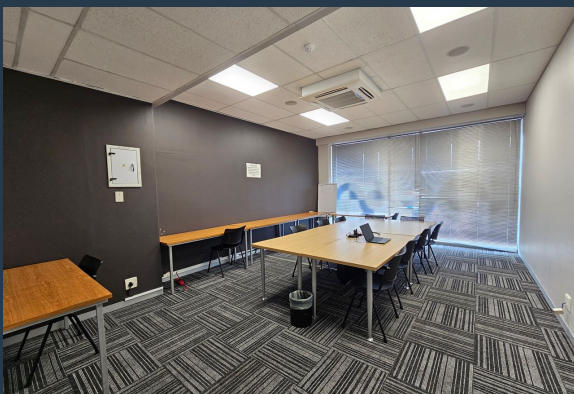


www.spire.co.za

TO LET



198 m² Office to Rent in Bellville Central. Ground floor offices at Louville Place. This office has excellent visibility and can be accessed from the street as well. Fitted out offices that are ready for a new tenant. Louville Place is a well-maintained B-grade office building located in Bellville Central, offering flexible office space for multiple tenants. This five-storey building provides a professional working environment with secure access and ample natural light. Large wrap-around windows ensure a bright and comfortable workspace, while the building's central location places tenants within walking distance of key business and government offices. Louville Place is conveniently located a block away from Voortrekker Road, placing...



WEB REF: SCL2262

Chantel Georgiadis | 0845251014 | chantelg@spire.co.za

PROPERTY | WITH PURPOSE

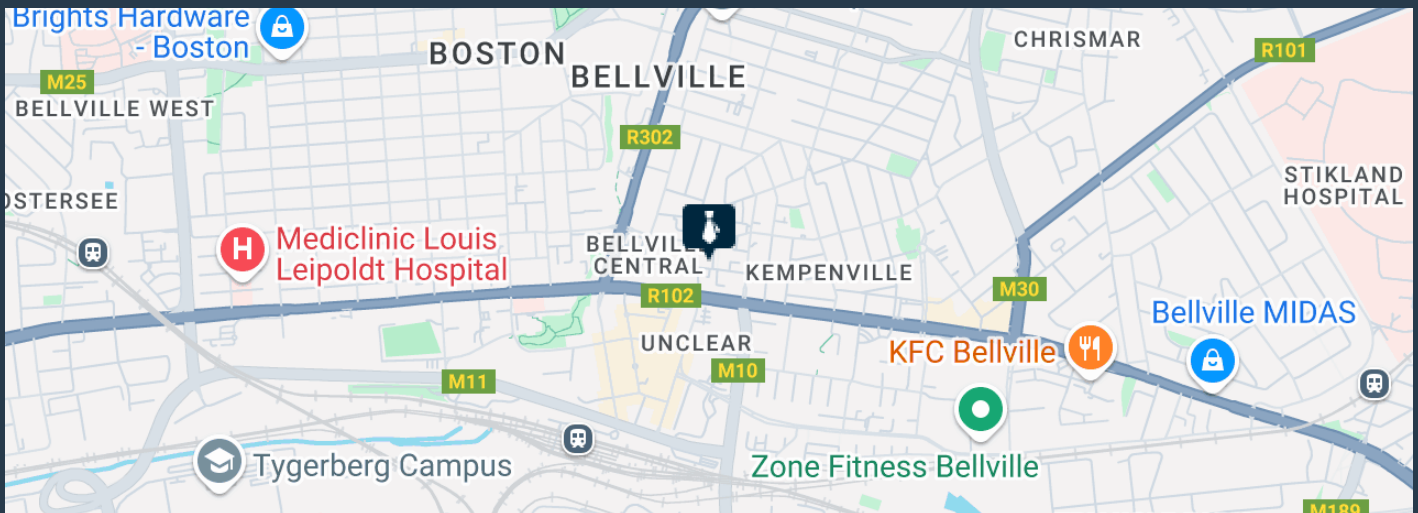
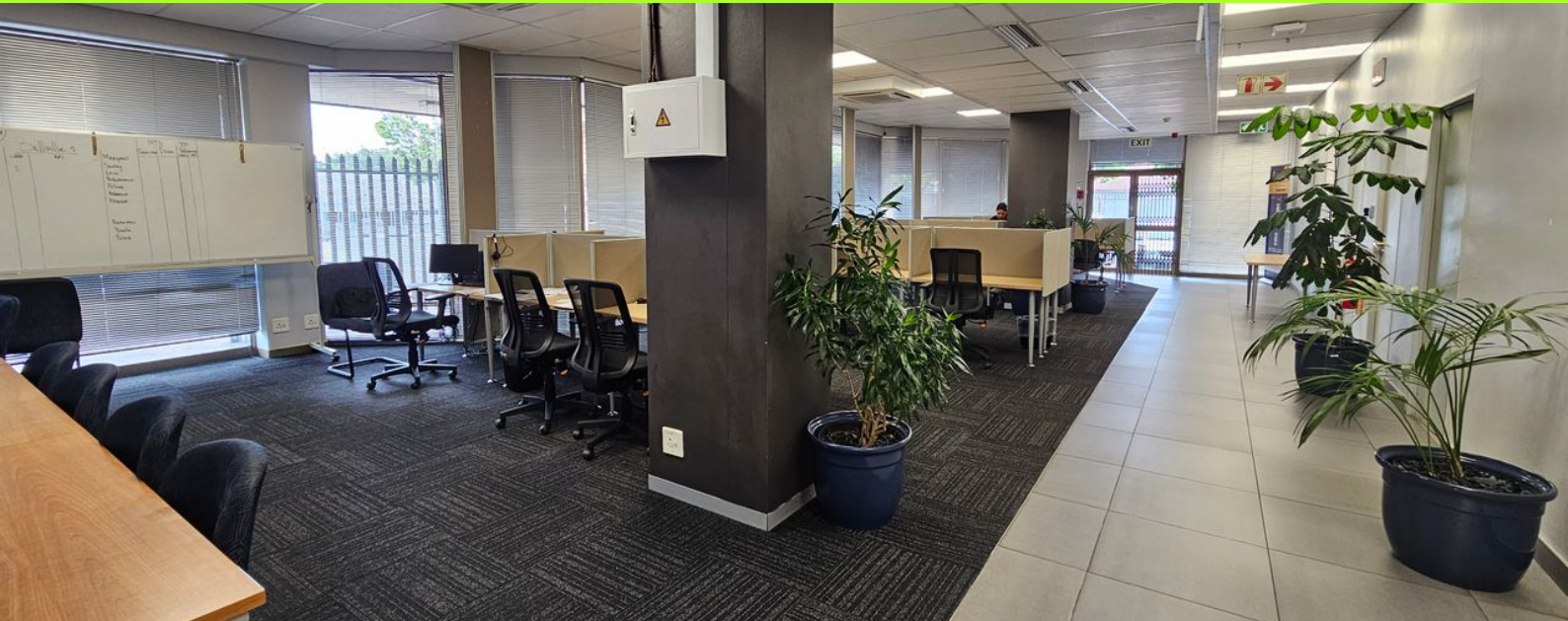
R34,650 per month excl. VAT

R175 per m²



www.spire.co.za

198 M² OFFICE TO RENT BELLVILLE CENTRAL - LOUWVILLE PLACE



PROPERTY DETAILS

▲ Security	Yes	▲ Floor Size	198m ²
▲ Air Conditioning	Yes	▲ Land Size	198
		▲ Zoning	Commercial

WEB REF: SCL2262

Chantel Georgiadis | 0845251014 | chantelg@spire.co.za

PROPERTY | WITH PURPOSE

R34,650 per month excl. VAT

R175 per m²



www.spire.co.za



CONTACT US



Chantel Georgiadis
Non-Principal Property Practitioner

☎ (021) 6854020
📱 0845251014
✉ chantelg@spire.co.za



Kevin Hellyer
Candidate Property Practitioner

☎ (021) 6854020
📱 061 484 5578
✉ kevinh@spire.co.za