

PROPERTY | WITH PURPOSE

R26,220 per month excl. VAT

R95 per m²

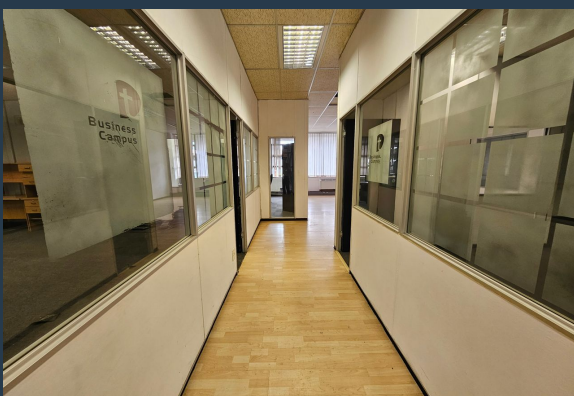
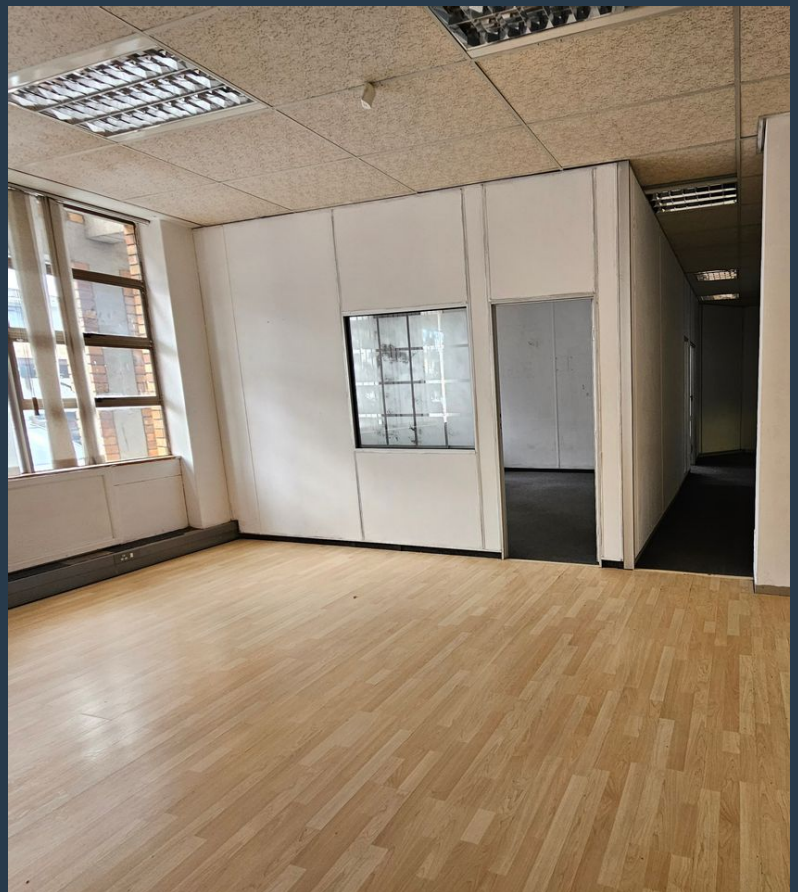


www.spire.co.za

TO LET



276 m² Office to rent on the ground floor at Louville Place in Bellville Central. Fitted out office space with partitioned offices as well as meeting and training rooms. Louville Place is a well-maintained B-grade office building located in Bellville Central, offering flexible office space for multiple tenants. This five-storey building provides a professional working environment with secure access and ample natural light. Large wrap-around windows ensure a bright and comfortable workspace, while the building's central location places tenants within walking distance of key business and government offices. Louville Place is conveniently located a block away from Voortrekker Road, placing tenants near major businesses, government...



WEB REF: SCL2261

Chantel Georgiadis | 0845251014 | chantelg@spire.co.za

PROPERTY | WITH PURPOSE

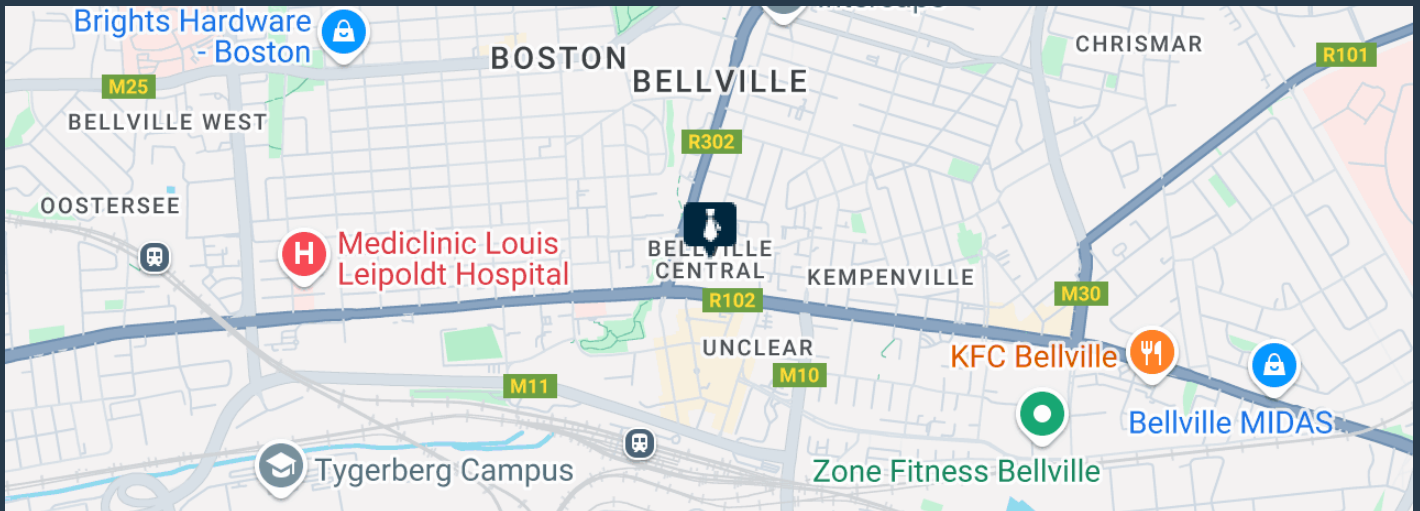
R26,220 per month excl. VAT

R95 per m²



www.spire.co.za

276 M² OFFICE TO RENT BELLVILLE CENTRAL - LOUWVILLE PLACE



PROPERTY DETAILS

▲ Security	Yes	▲ Floor Size	276m ²
▲ Air Conditioning	Yes	▲ Land Size	276
		▲ Zoning	Commercial

WEB REF: SCL2261

Chantel Georgiadis | 0845251014 | chantelg@spire.co.za

PROPERTY | WITH PURPOSE

R26,220 per month excl. VAT

R95 per m²



www.spire.co.za



CONTACT US



Chantel Georgiadis
Non-Principal Property Practitioner

☎ (021) 6854020
📱 0845251014
✉ chantelg@spire.co.za



Kevin Hellyer
Candidate Property Practitioner

☎ (021) 6854020
📱 061 484 5578
✉ kevinh@spire.co.za

WEB REF: SCL2261

Chantel Georgiadis | 0845251014 | chantelg@spire.co.za