

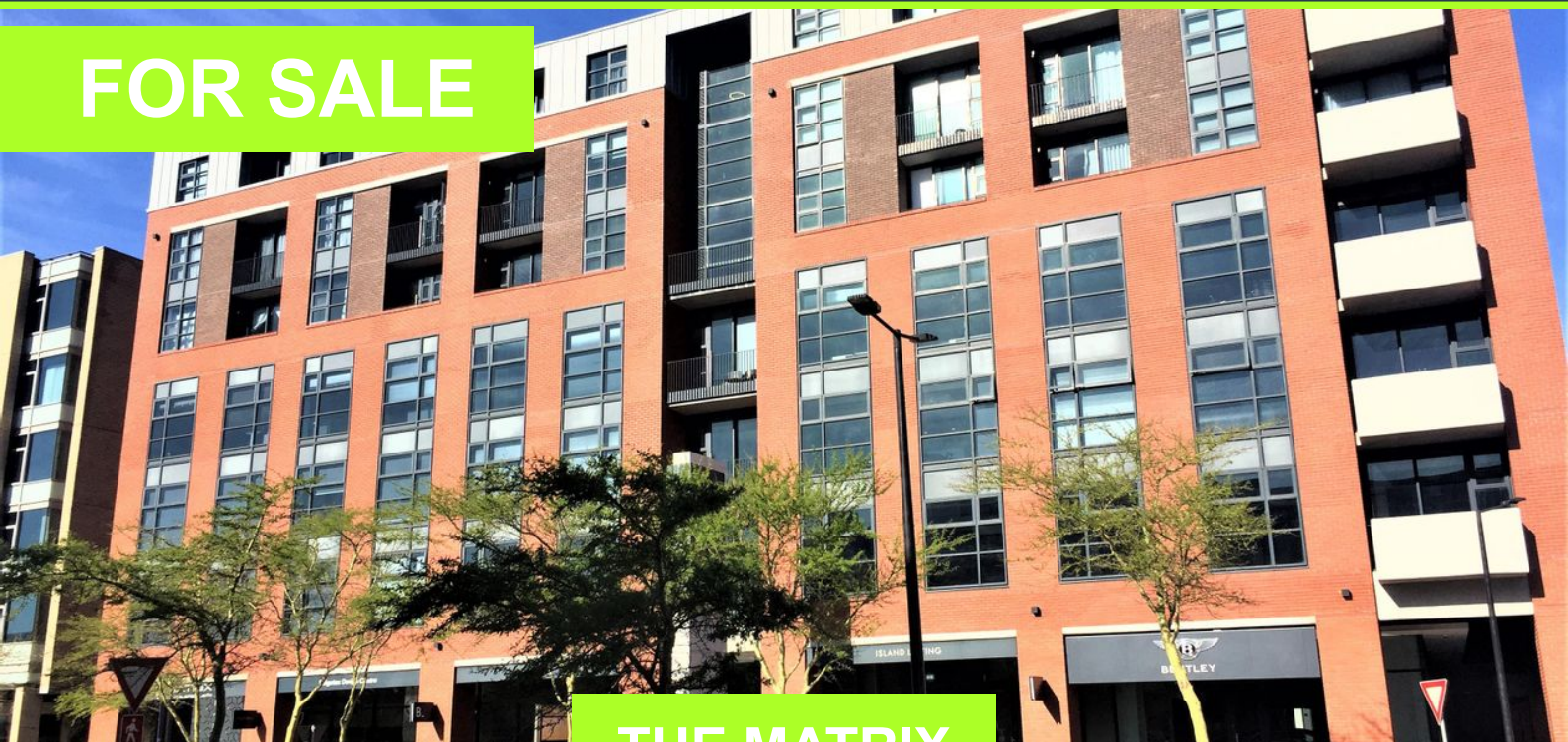
PROPERTY | WITH PURPOSE

# R3,650,000



[www.spire.co.za](http://www.spire.co.za)

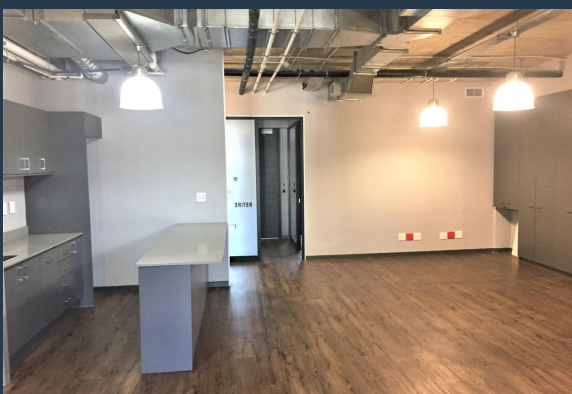
## FOR SALE



### THE MATRIX

1 The Matrix, energy Lane

142 Sqm Office space for sale in Century City. Neat open plan offices located on the 3rd floor. The space has a small reception area as well as a meeting room, open plan area with a full kitchen and access to shared bathrooms on each floor. The tenant can lease secure basement parking bays in the building with ample visitor parking available. Century City is situated between the Northern Suburbs and Southern Suburbs of Cape Town, making it one of the most centrally located business areas. Century City is a mixed-use area consisting of secure business parks and low-rise office buildings. The area has a large residential component as well as several retail centers. The suburb is conveniently located adjacent to the N1 Highway providing...



WEB REF: CL2570

Chantel Georgiadis | 0845251014 | [chantelg@spire.co.za](mailto:chantelg@spire.co.za)

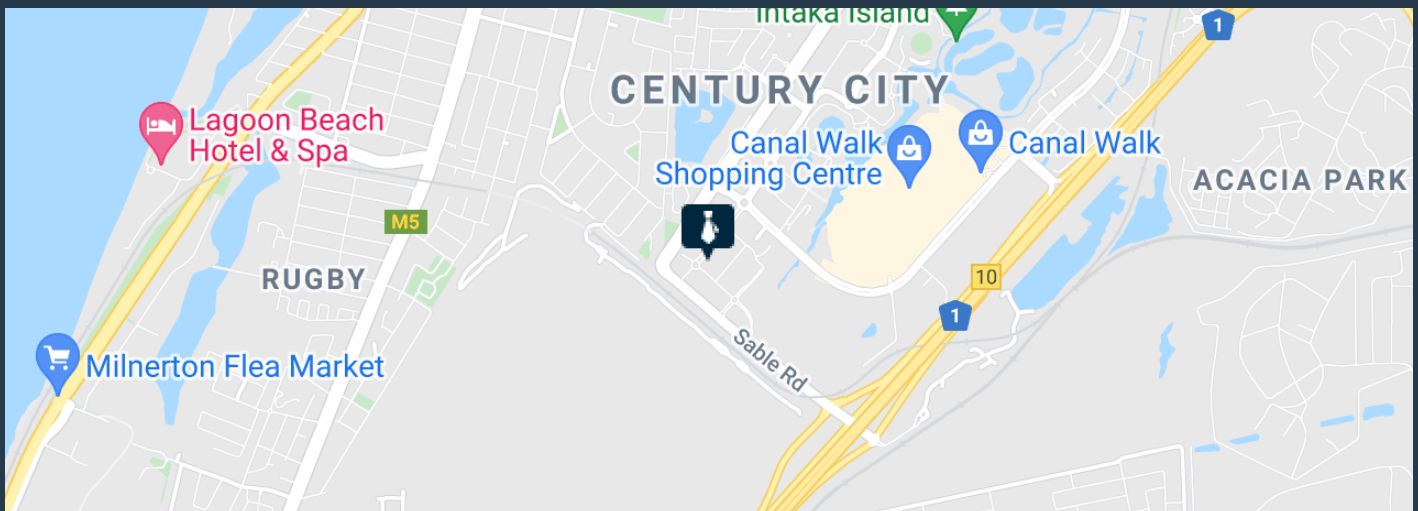
PROPERTY | WITH PURPOSE

# R3,650,000



[www.spire.co.za](http://www.spire.co.za)

## OFFICE SPACE FOR SALE CENTURY CITY | THE MATRIX



### PROPERTY DETAILS

▲ Security	Yes	▲ Floor Size	142m <sup>2</sup>
▲ Air Conditioning	Yes	▲ Zoning	Commercial

WEB REF: CL2570

Chantel Georgiadis | 0845251014 | [chantelg@spire.co.za](mailto:chantelg@spire.co.za)



PROPERTY | WITH PURPOSE

# R3,650,000



[www.spire.co.za](http://www.spire.co.za)



## CONTACT US



**Chantel Georgiadis**  
Non-Principal Property Practitioner

📞 (021) 6854020  
📱 0845251014  
✉ [chantelg@spire.co.za](mailto:chantelg@spire.co.za)



**Kevin Hellyer**  
Candidate Property Practitioner

📞 (021) 6854020  
📱 061 484 5578  
✉ [kevinh@spire.co.za](mailto:kevinh@spire.co.za)

WEB REF: CL2570

Chantel Georgiadis | 0845251014 | [chantelg@spire.co.za](mailto:chantelg@spire.co.za)