

PROPERTY | WITH PURPOSE

# R13,000,000

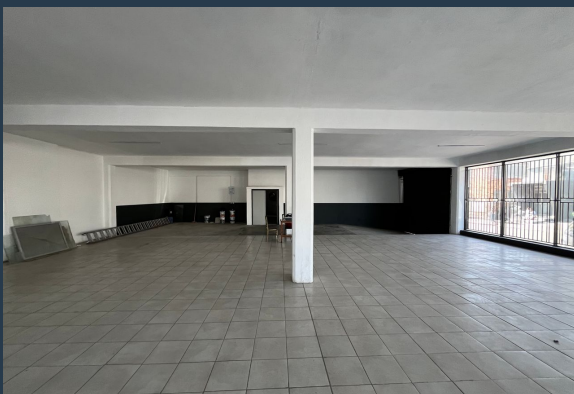
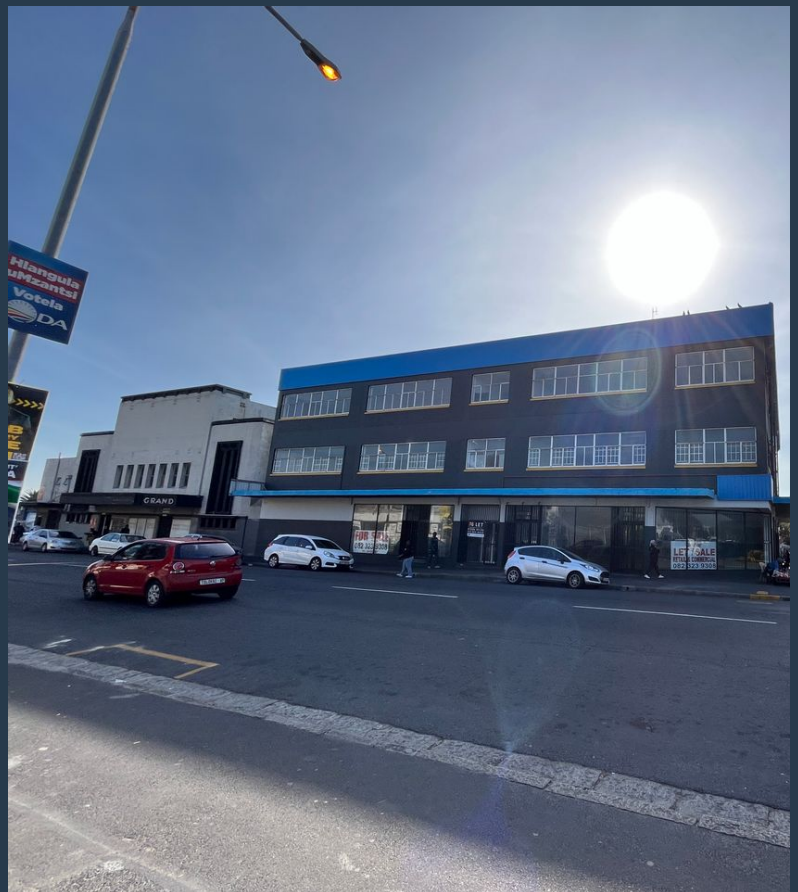


[www.spire.co.za](http://www.spire.co.za)

## FOR SALE



2400 square meters commercial space to let in Maitland. Ground floor is perfect for retail, has roller shutter access, lift, kitchens and stairs to service this 3-storey building. An unparalleled opportunity awaits with this extraordinary mixed-use building, now on the market at an exceptionally enticing price. Prepare to be impressed by the remarkable transformation this property has undergone through meticulous revamping. Every aspect of the building has been refurbished with care, resulting in a space that radiates character and sophistication. With the comprehensive renovation already completed, you can confidently step into this property, knowing it is move-in ready for both occupants and investors alike. The building's adaptable...



WEB REF: SCL1831

Logan Du Pessis | 0736449934 | [logand@spire.co.za](mailto:logand@spire.co.za)

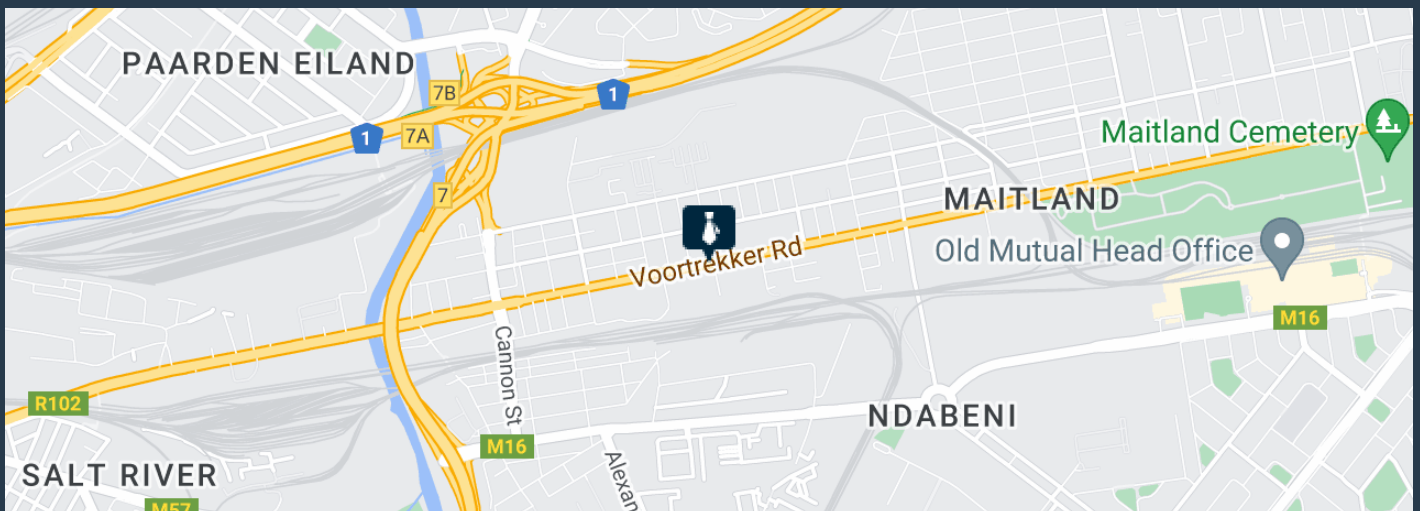
PROPERTY | WITH PURPOSE

# R13,000,000



[www.spire.co.za](http://www.spire.co.za)

## COMMERCIAL SPACE TO RENT IN MAITLAND | STANDALONE BUILDING



### PROPERTY DETAILS

- ▲ Floor Size 2400m<sup>2</sup>
- ▲ Zoning Commercial

WEB REF: SCL1831

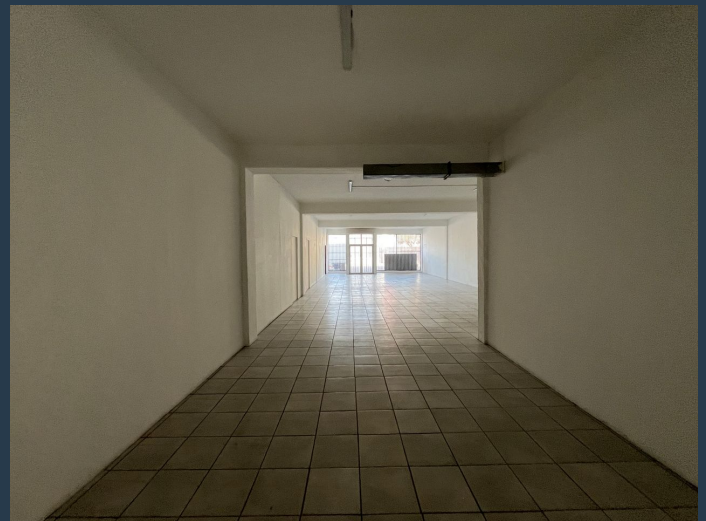
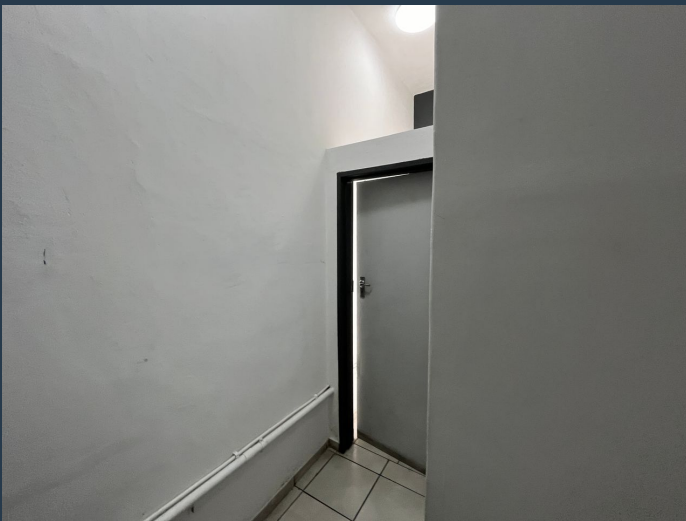
Logan Du Pessis | 0736449934 | [logand@spire.co.za](mailto:logand@spire.co.za)

PROPERTY | WITH PURPOSE

# R13,000,000



[www.spire.co.za](http://www.spire.co.za)



## CONTACT US



**Logan Du Pessis**

Agent

☎ (021) 6854020

📱 0736449934

✉ [logand@spire.co.za](mailto:logand@spire.co.za)



**Kevin Hellyer**

Candidate Property Practitioner

☎ (021) 6854020

📱 061 484 5578

✉ [kevinh@spire.co.za](mailto:kevinh@spire.co.za)

WEB REF: SCL1831

Logan Du Pessis | 0736449934 | [logand@spire.co.za](mailto:logand@spire.co.za)